

Fix aluminium top hat through metal cladding with stainless steel hex head timberfix 12G x 65mm screw fastener

Ultrabatten system UA 10598
50mm x 100mm outer batten clipped to inner with end cap on both ends. Outer batten UA10597 50mm x 50mm also available

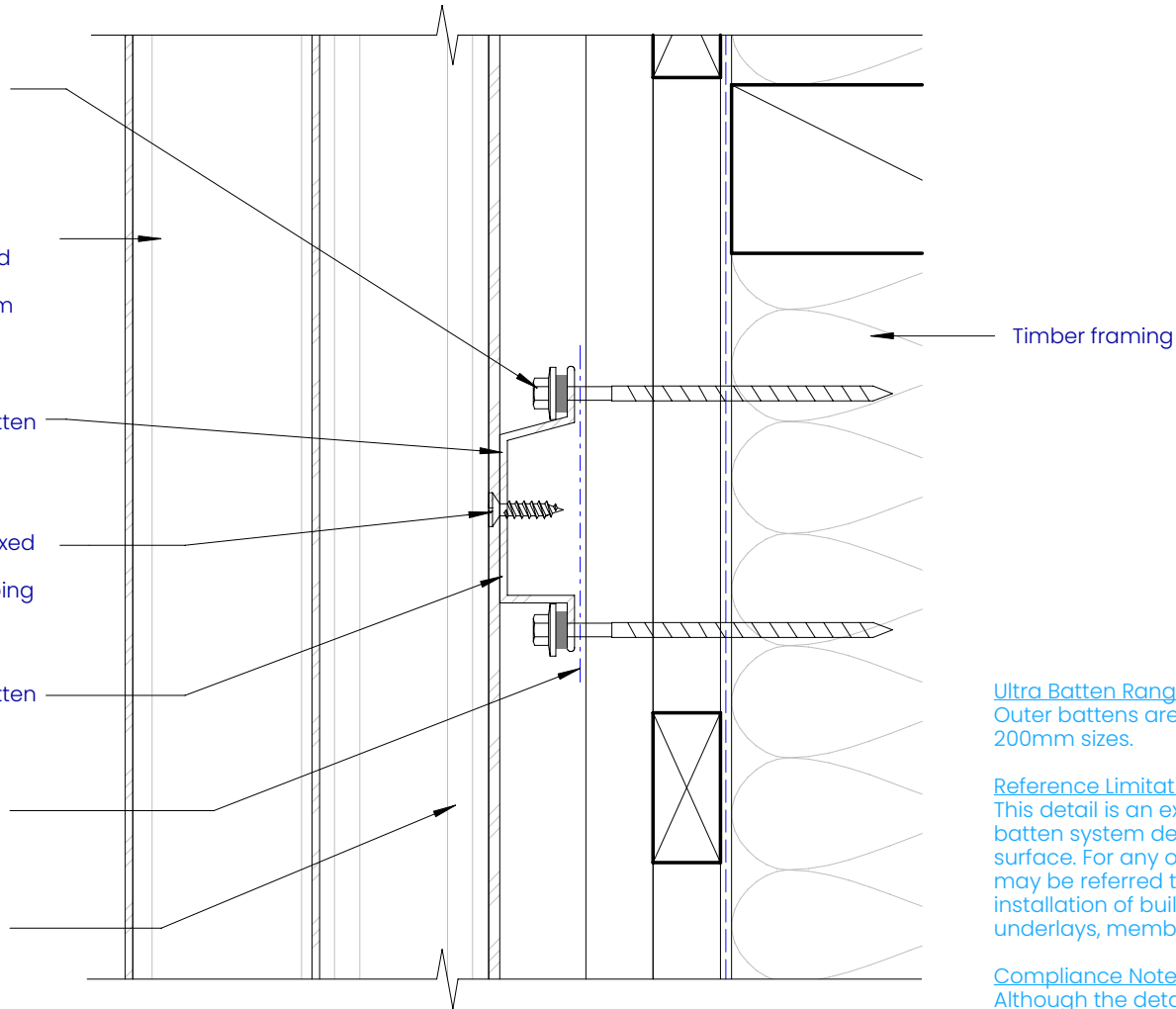
Ullrich aluminium Cavity Top Hat Batten fixed to timber structure through cladding system

Ullrich aluminium batten inner clip fixed to top hat section with 8G x 20mm countersunk stainless steel self tapping screws

Ullrich aluminium Cavity Top Hat Batten fixed to timber structure through cladding system

Black polythene flashing tape between metal cladding and powdercoated top hat

Ultrabatten system UA10596 50mm batten inner clip



Ultra Batten Ranges
Outer battens are also available in 50mm, 150mm, and 200mm sizes.

Reference Limitation
This detail is an example of using UA10596 and UA10598 batten system demonstrating direct fix on concrete wall surface. For any other Ultra Batten profile fixing on concrete may be referred to this detail applying same method of installation of building elements such as damp proof course, underlays, membrane sheets etc.

Compliance Note
Although the details are generally in accordance with NZBC E2/AS1, the building Architect / Designer is ultimately responsible for details to meet the NZBC E2/AS1 and NASH Standard Part Two: May 2019

ULTRABATTEN.

Ultra-high performance cladding systems

PO Box 58009
Botany
Auckland 2163

Tel: 0800 500 338
Email: buildingsystems@vulcan.co
Web: buildingsystems.vulcan.co

VULCAN.
© 2023 Vulcan. All rights reserved.

UB04

TOP HAT SIDE VIEW DETAIL

Building Systems: UltraBatten Cladding System

REVISION:	01
SCALE:	1:2
DATE:	2024