

Note: Ensure to alternate spacings of fixings for battens and Locator Clips to avoid risk of splitting batten

Ultraclad® vertical weatherboards fixed with Locator Clips fixed at Max 600 mm vertical centres with 8g x 2" CSK Sq S/S self tapping screws through batten into dwang / nog

Building underlay

Cavity batten  
Refer V00 Batten Options

Flashing tape

Note: Underlay strips to isolate aluminium from treated timber battens  
Refer V00

Ultraclad® UA 4863 Vertical Starter Strip fixed to framing at 300 mm centres with 8g x 2" CSK Sq S/S self tapping screws

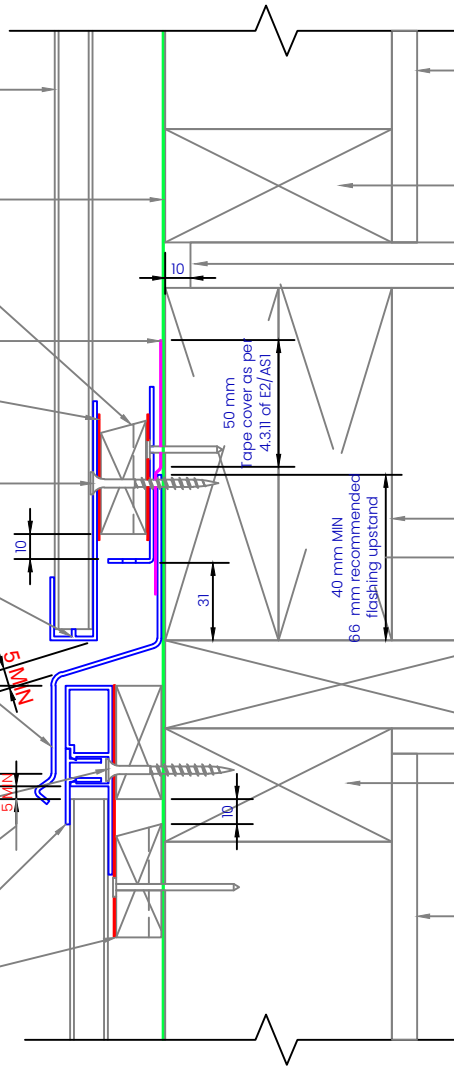
Ultraclad® UA 4863 Board Starter B with 5 mm diameter drainage holes drilled through base of Starter at 300 mm centres

Ultraclad® UA 7919 Inter-Storey Flashing

Screw through UA 7584 base at Max 600 mm horizontal centres with 8g x 2" CSK Sq. S/S self tapping screws through batten into frame  
Minimum 5 mm clearance to allow for thermal expansion

Ultraclad® UA 5833 Soffit Clip Top  
Cavity batten  
Refer V00 Batten Options

Note: this detail is required to limit cavities to 2 storeys or 7 m Max - Refer E2/AS1 clause 9.1.9.4



Interior lining

Bottom plate

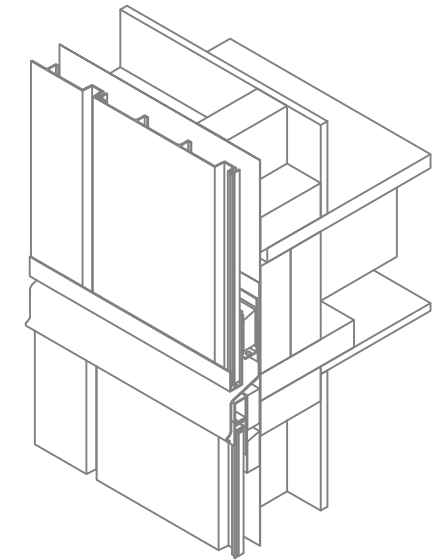
Flooring to finish 10 mm back from outside framing

Continuous boundary joists

For low to very-high wind zones the 'Z' flashing must have a 40 mm upstand and overlap the weatherboard face below by 35 mm. For extra-high wind zones the 'Z' flashing must have 65 mm upstand and overlap the weatherboard face below by 60 mm

Top plate

Interior lining



**ULTRACLAD**

Ultra-high performance cladding systems

PO Box 58009  
Botany  
Auckland 2163

Tel: 0800 500 338  
Email: buildingsystems@vulcan.co  
Web: buildingsystems.vulcan.co

**VULCAN.**  
© 2023 Vulcan. All rights reserved.

V23

## INTER-STOREY JUNCTION ON CAVITY

Building Systems: Vertical Weatherboard Cavity System

REVISION: 11

SCALE: 1 : 3 (@A4)

DATE: 2024

BRANZ APPRAISAL #796