

HORIZONTAL WEATHERBOARD CAVITY SYSTEM

REV: 11 2024

- [H00: Wall Batten Elevation](#)

[H01: External Corner on Cavity](#)

[H02: Internal Corner on Cavity](#)

[H03: Horizontal Wall Jointer](#)

[H04: 90 Deg Corner Cap](#)

[H05: Vertical Wall Starter](#)

[H06: No Soffit Detail on Cavity](#)

[H07: Soffit Detail on Cavity](#)

[H08: Timber Floor on Cavity](#)

[H09: Window Head on Cavity](#)

[H10: Window Jam on Cavity](#)

[H11: Window Sill on Cavity](#)

[H12: Sill – Jamb on Cavity](#)
- [H13: Head Flashing / Head Starter / Jamb Iso](#)

[H14: Head – Jamb Iso](#)

[H15: Head – Jamb Notching Details](#)

[H16: Meter Box Head on Cavity](#)

[H17: Meter Box Jamb on Cavity](#)

[H18: Meter Box Sill on Cavity](#)

[H19: Pipe Penetrations on Cavity](#)

[H20: Roof – Wall Junction on Cavity](#)

[H21: Gutter Wall Junction on Cavity](#)

[H22: Parapet on Cavity](#)

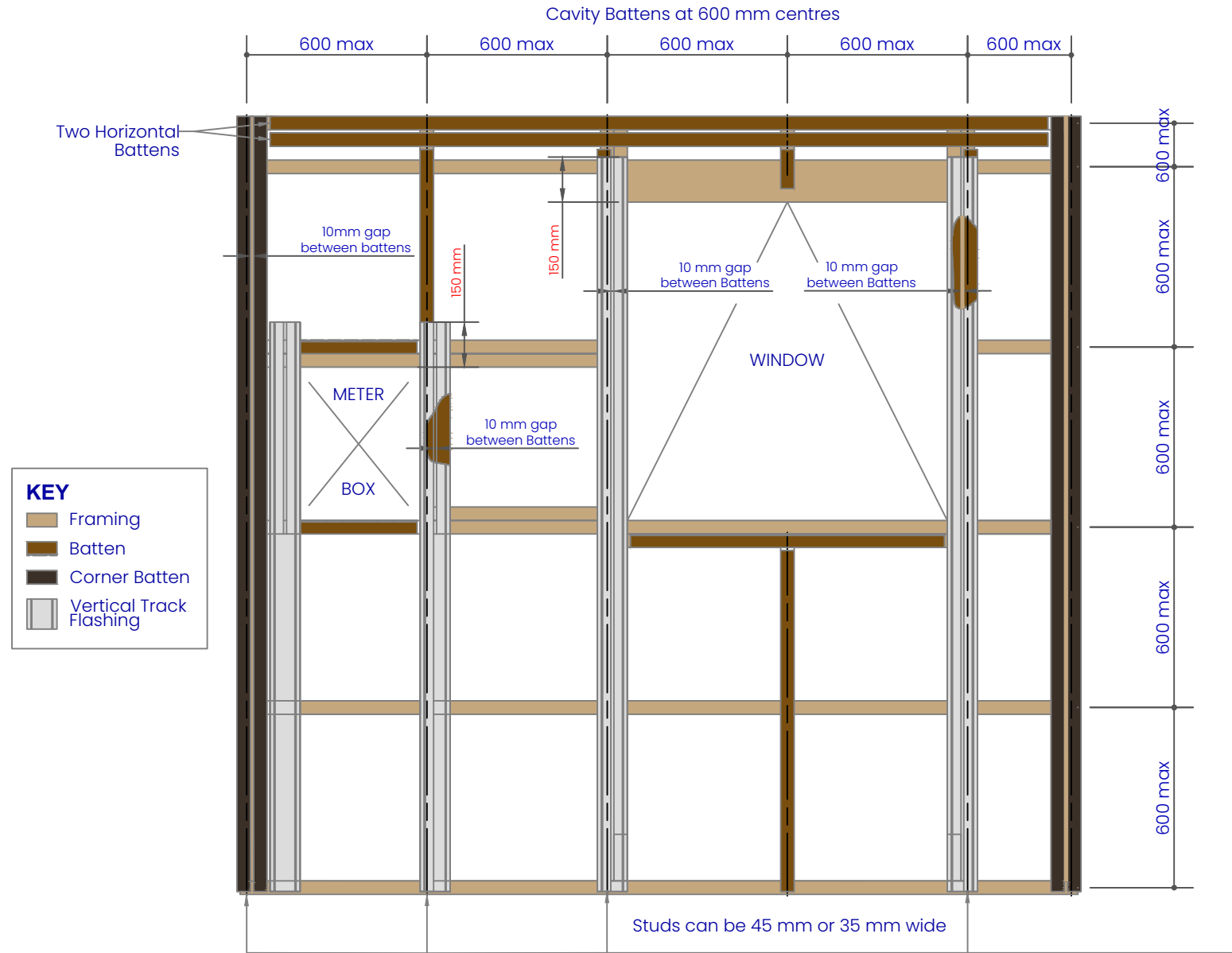
[H23: Deck Junction on Cavity](#)

[H24: Inter – Storey Junction on Cavity](#)

[H25: Profiles](#)

[H26: Accessories](#)

| | |
|----------------------|-------------|
| REVISION: | 11 |
| SCALE: | 1 : 2 (@A4) |
| DATE: | 2024 |
| BRANZ APPRAISAL #487 | |



Batten options

Impervious barrier (MDPE) or similar tape between cladding and batten.
To comply with NZBC E2/AS1 - Table 23.

Note:
Some machining of battens may be required to avoid "build up". i.e. back flashings / tapes

Cavity plastic Batten
Note: packing/shims may be needed to ensure boards are fitted flat without distortion.
* Additional timber may be required at soffit to support UA 5831 Soffit Base.

Note: Important

Underlay strips to isolate aluminium from treated timber battens 50 mm wide medium density polyethylene (MDPE)

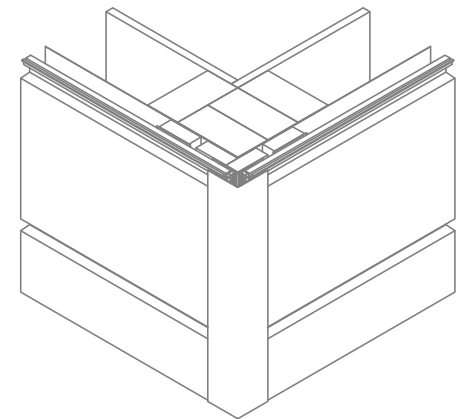
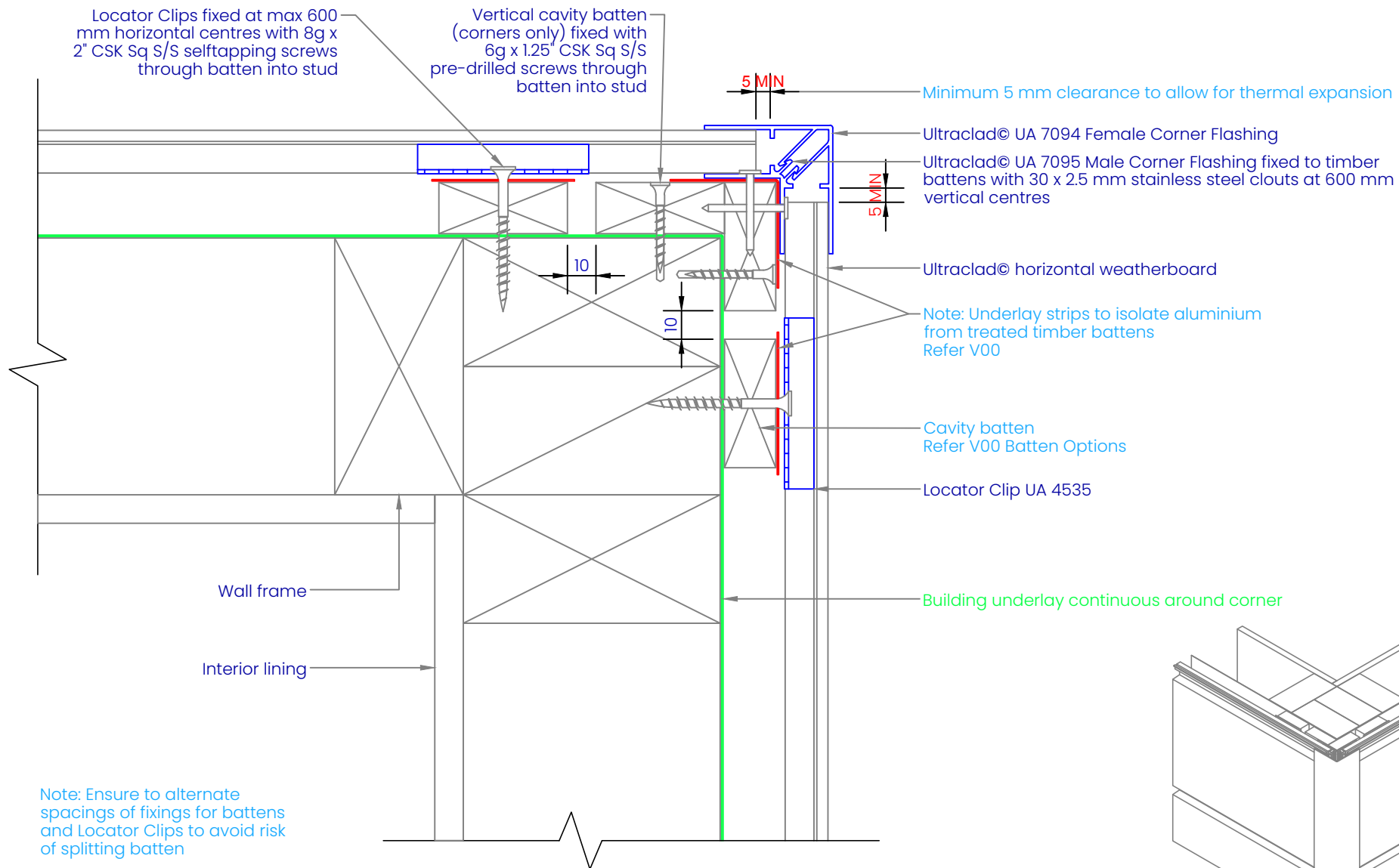
To comply with NZBC E2/AS1 - Table 23.
Properties of roofing underlays and wall underlays, separates aluminium components and accessories from timber battens treated with copper-based treatments

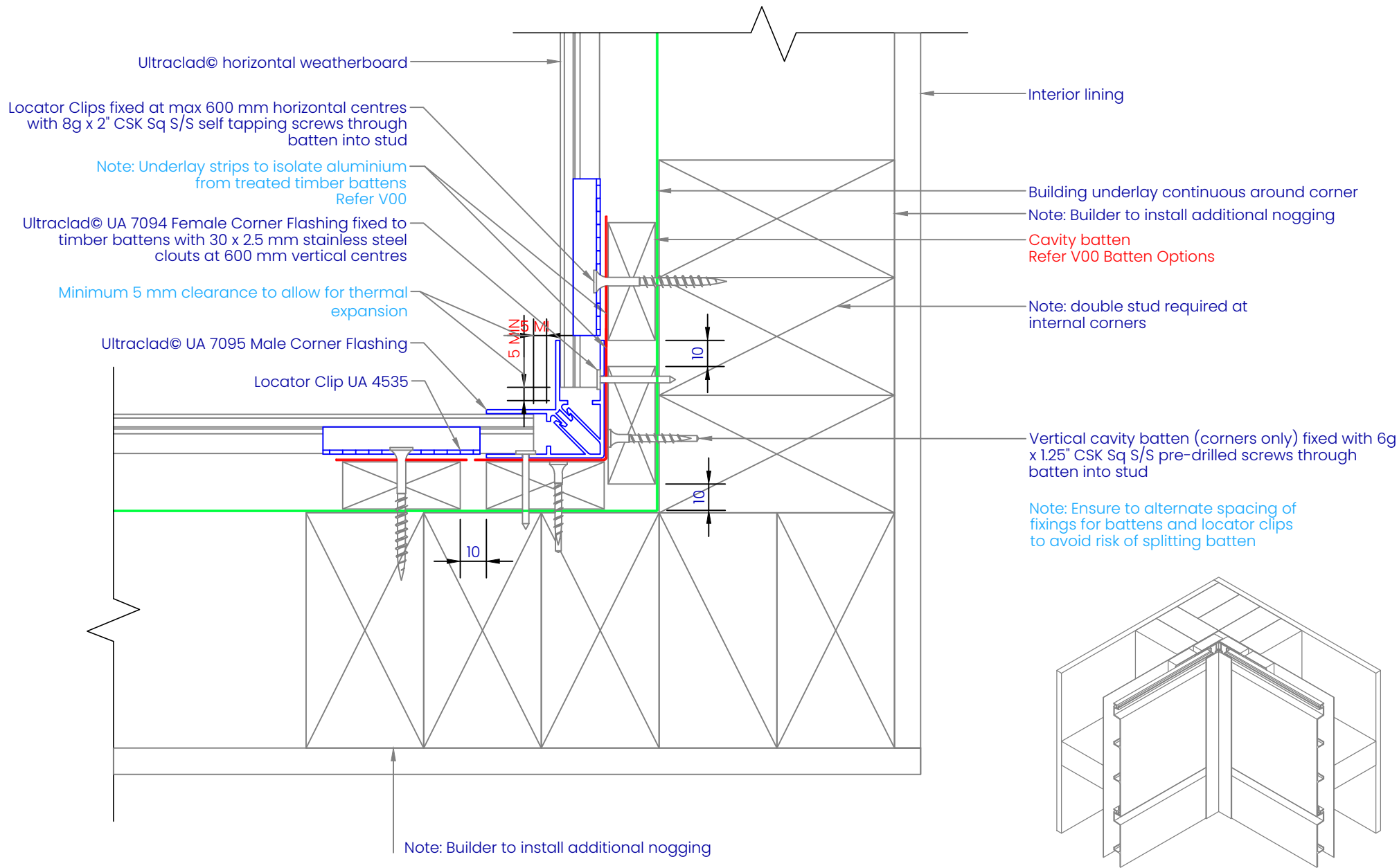
Cavity closers required as per NZBC E2/AS1 (section 9.1.8)

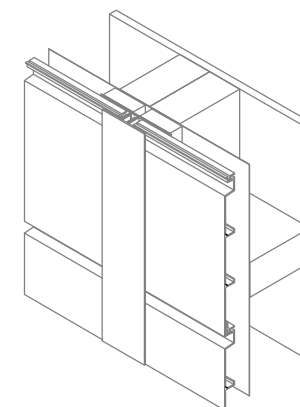
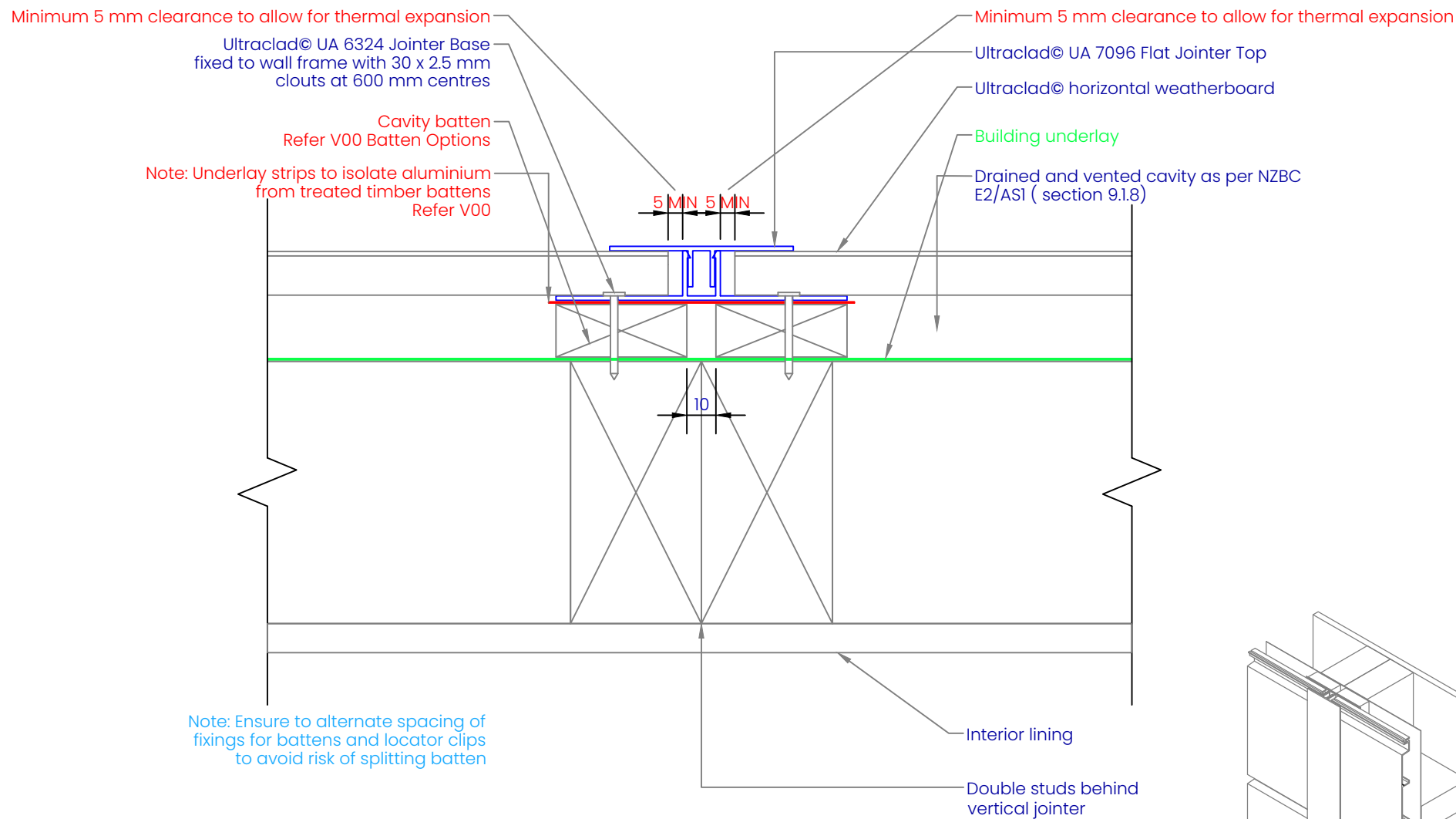
Vertical Cavity Corner Batten
50 x 25 mm H3.1 treated Radiata.
Cavity battens fixed with 6g x 1.25" CSK Sq S/S pre-drilled screws through batten into stud

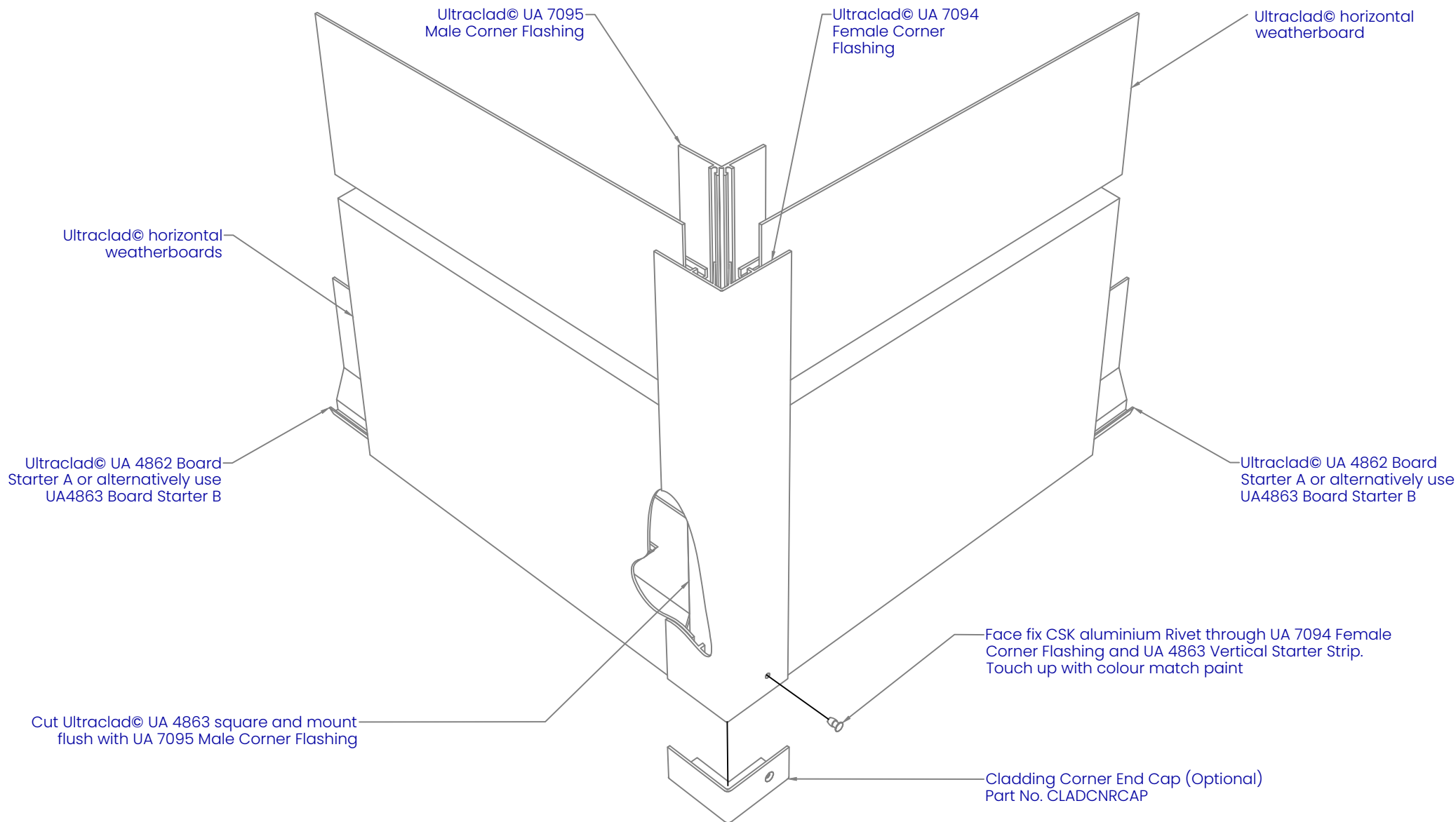
0.9 x 90 mm Aluminium Track Flashing.
Alternatively use Dynex Dynaflash.

| | |
|----------------------|--------------|
| REVISION: | 11 |
| SCALE: | 1 : 20 (@A4) |
| DATE: | 2024 |
| BRANZ APPRAISAL #487 | |









ULTRACLAD

Ultra-high performance cladding systems

PO Box 58009
Botany
Auckland 2163

Tel: 0800 500 338
Email: buildingsystems@vulcan.co
Web: buildingsystems.vulcan.co

VULCAN.

© 2023 Vulcan. All rights reserved.

H04

90 DEG CORNER CAP

Building Systems: Horizontal Weatherboard Cavity System

REVISION:

11

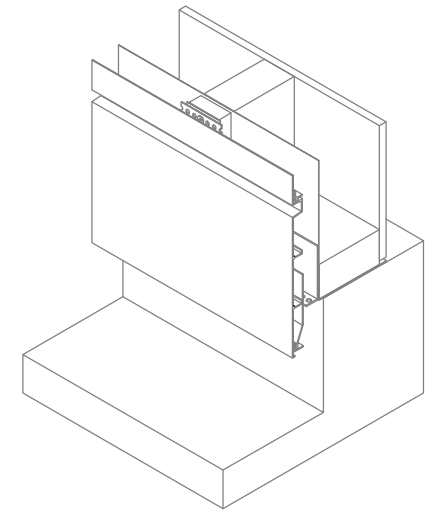
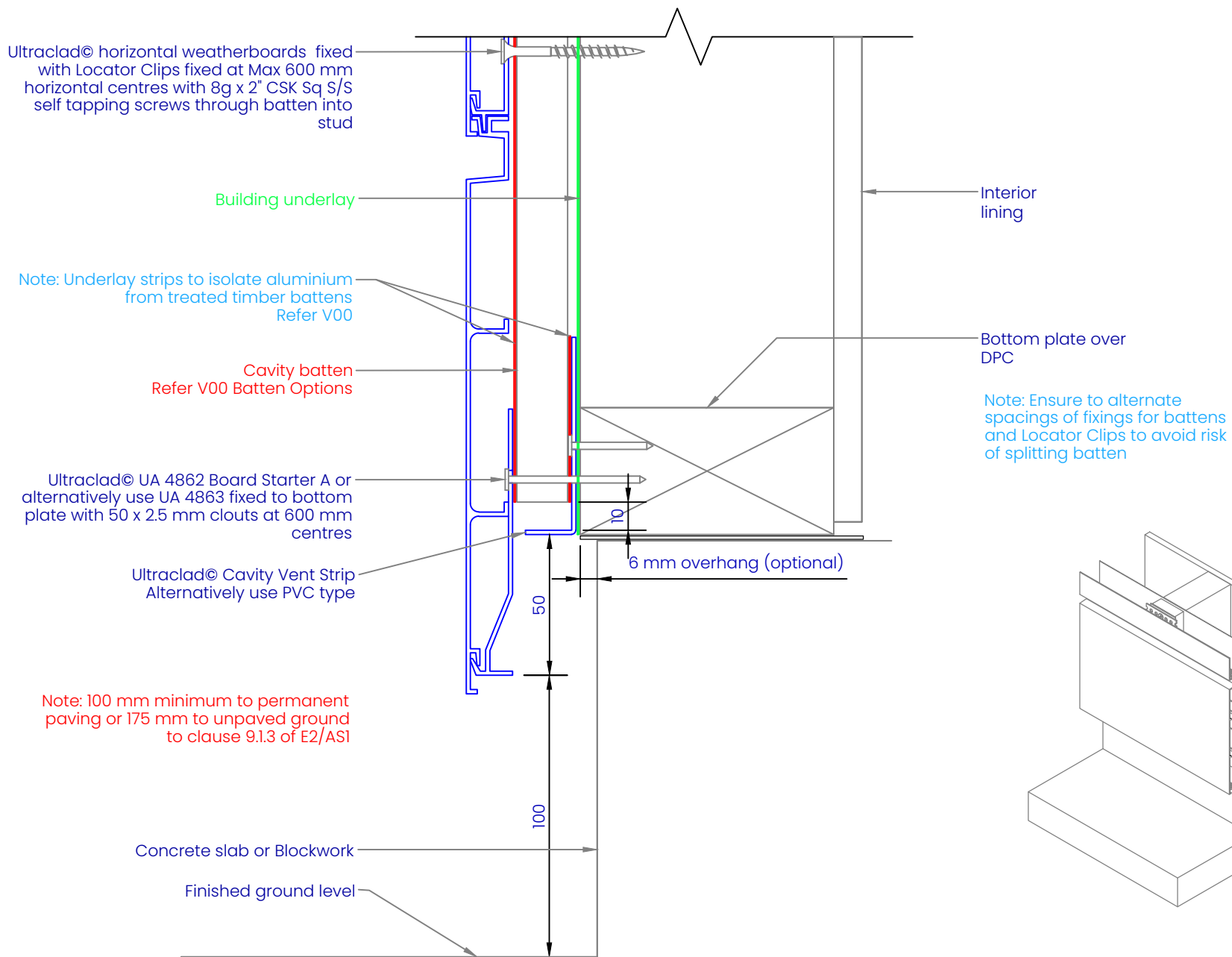
SCALE:

1 : 3 (@A4)

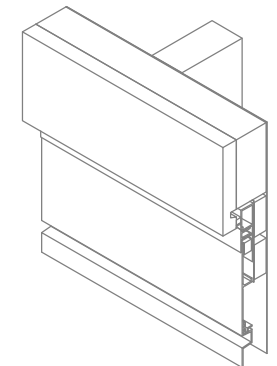
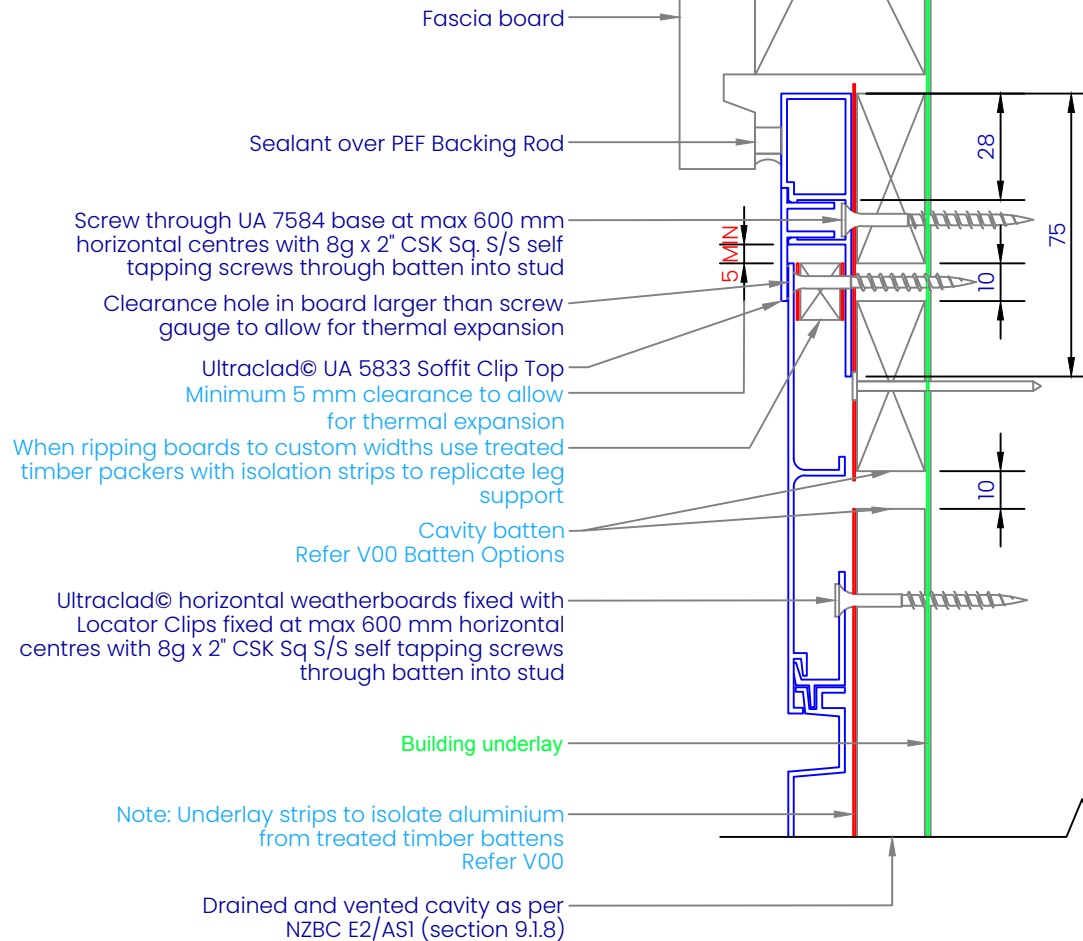
DATE:

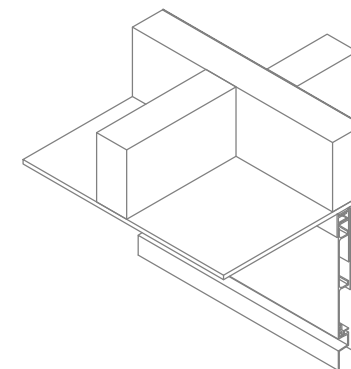
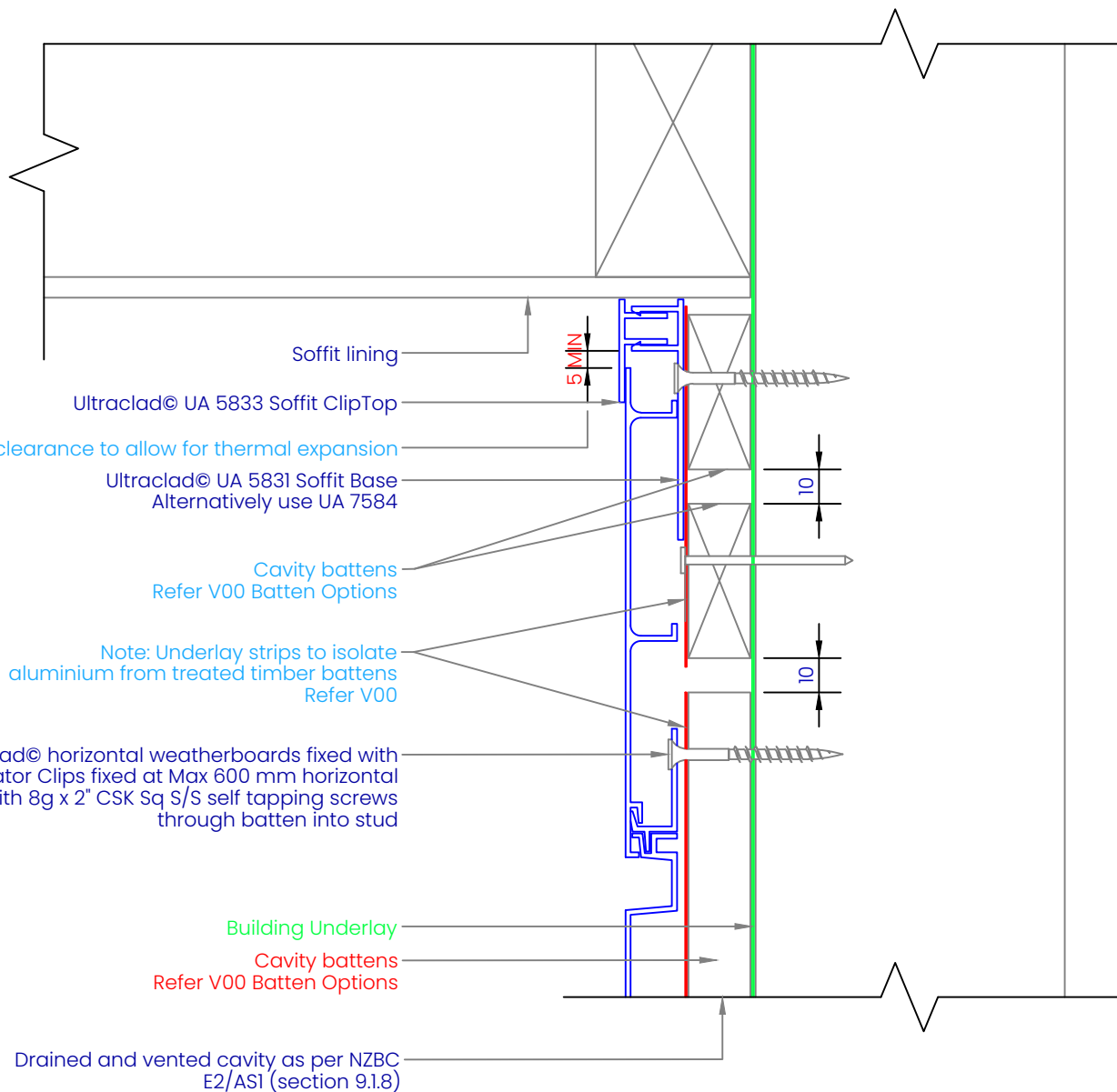
2024

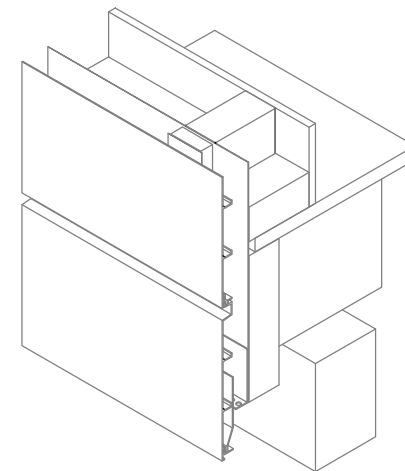
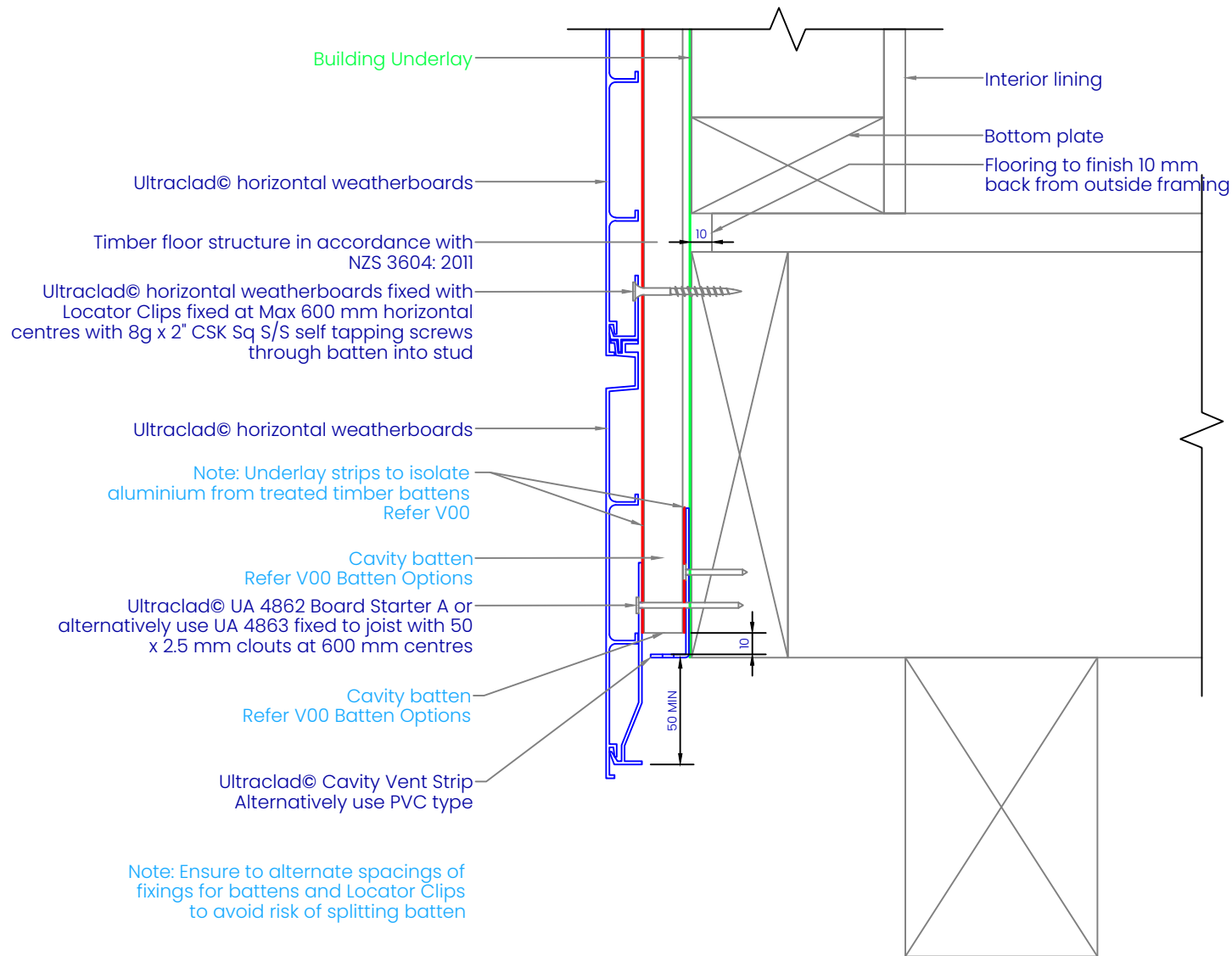
BRANZ APPRAISAL #487



Note: Ensure to alternate spacings of fixings for battens and Locator Clips to avoid risk of splitting batten







ULTRACLAD
Ultra-high performance cladding systems

PO Box 58009
Botany
Auckland 2163

Tel: 0800 500 338
Email: buildingsystems@vulcan.co
Web: buildingsystems.vulcan.co

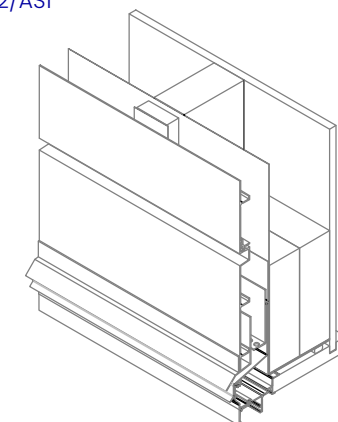
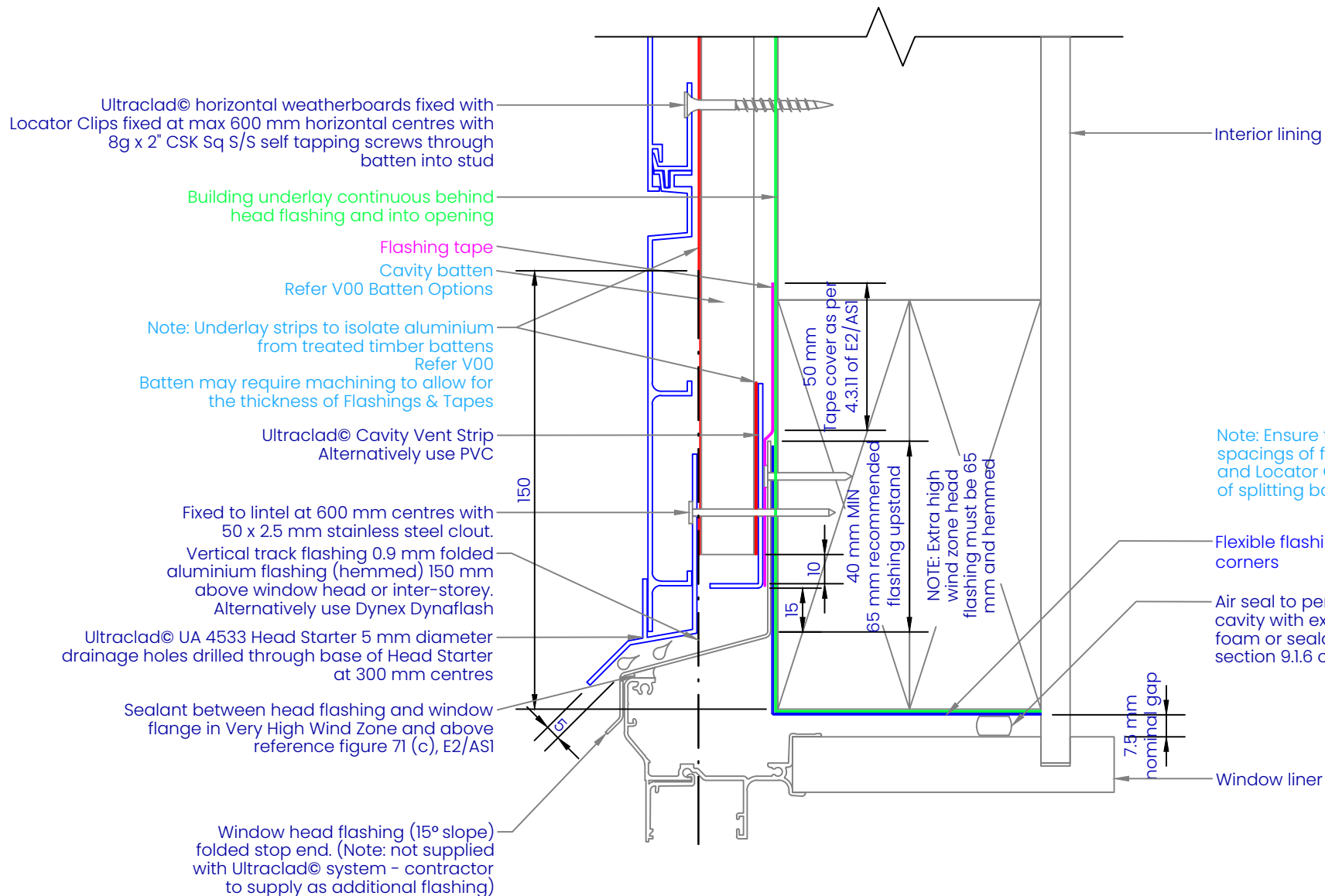
VULCAN.
© 2023 Vulcan. All rights reserved.

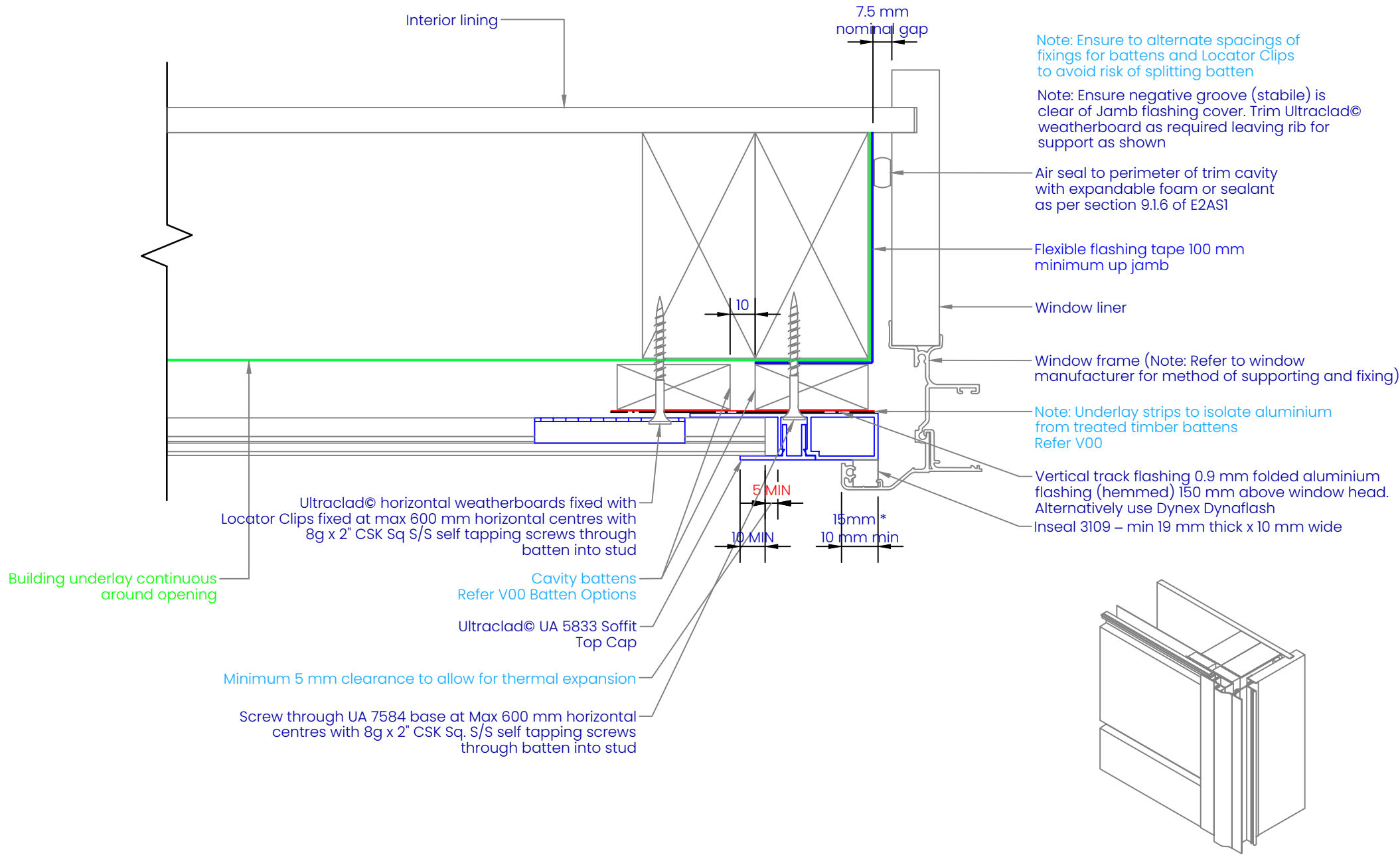
H08

TIMBER FLOOR ON CAVITY

Building Systems: Horizontal Weatherboard Cavity System

| | |
|----------------------|-------------|
| REVISION: | 11 |
| SCALE: | 1 : 3 (@A4) |
| DATE: | 2024 |
| BRANZ APPRAISAL #487 | |

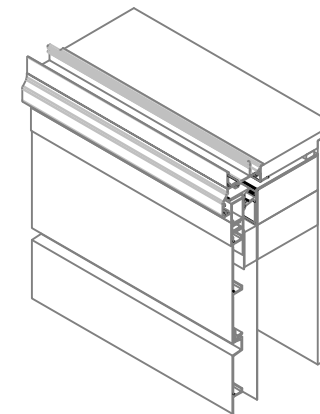
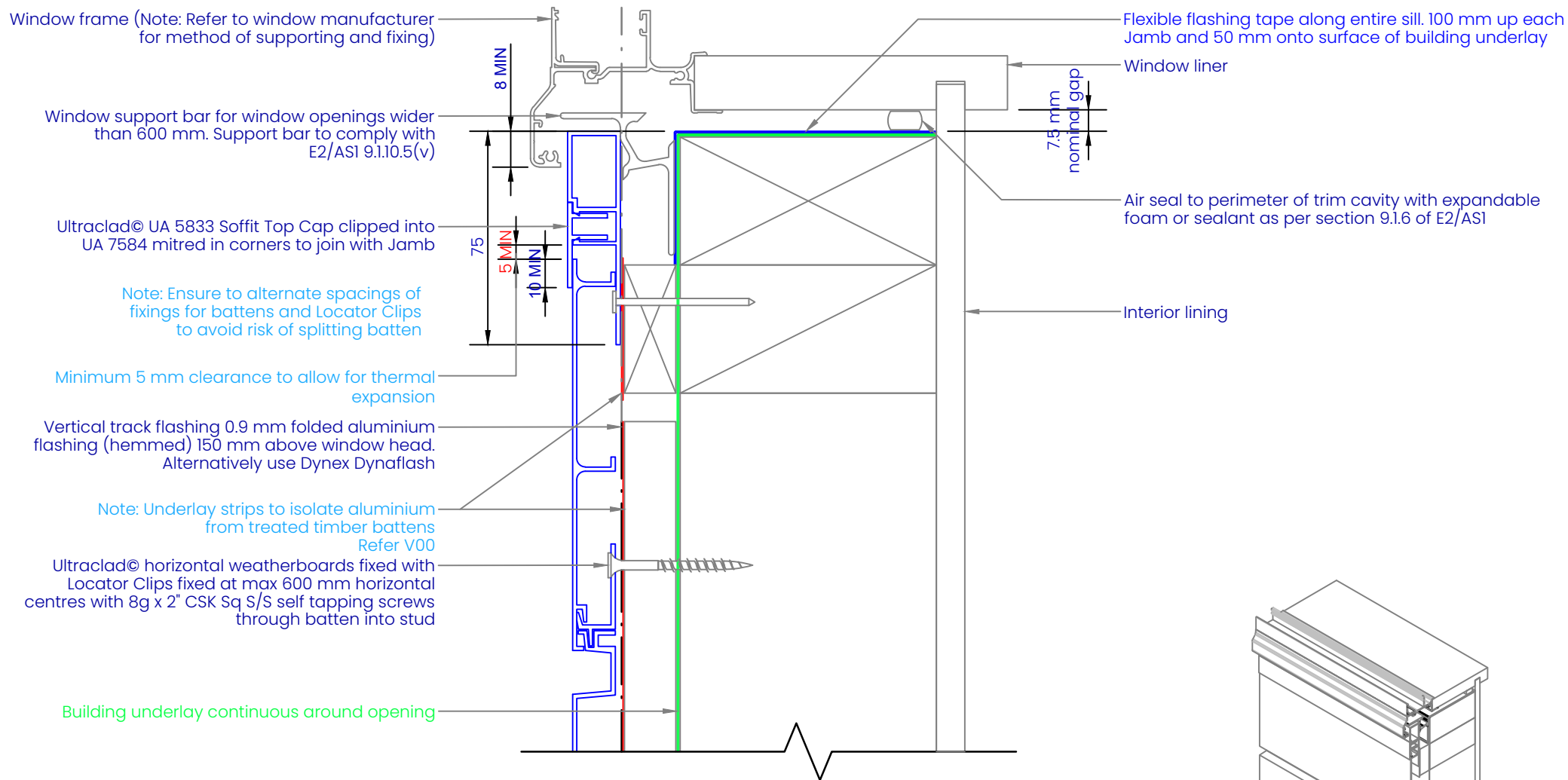


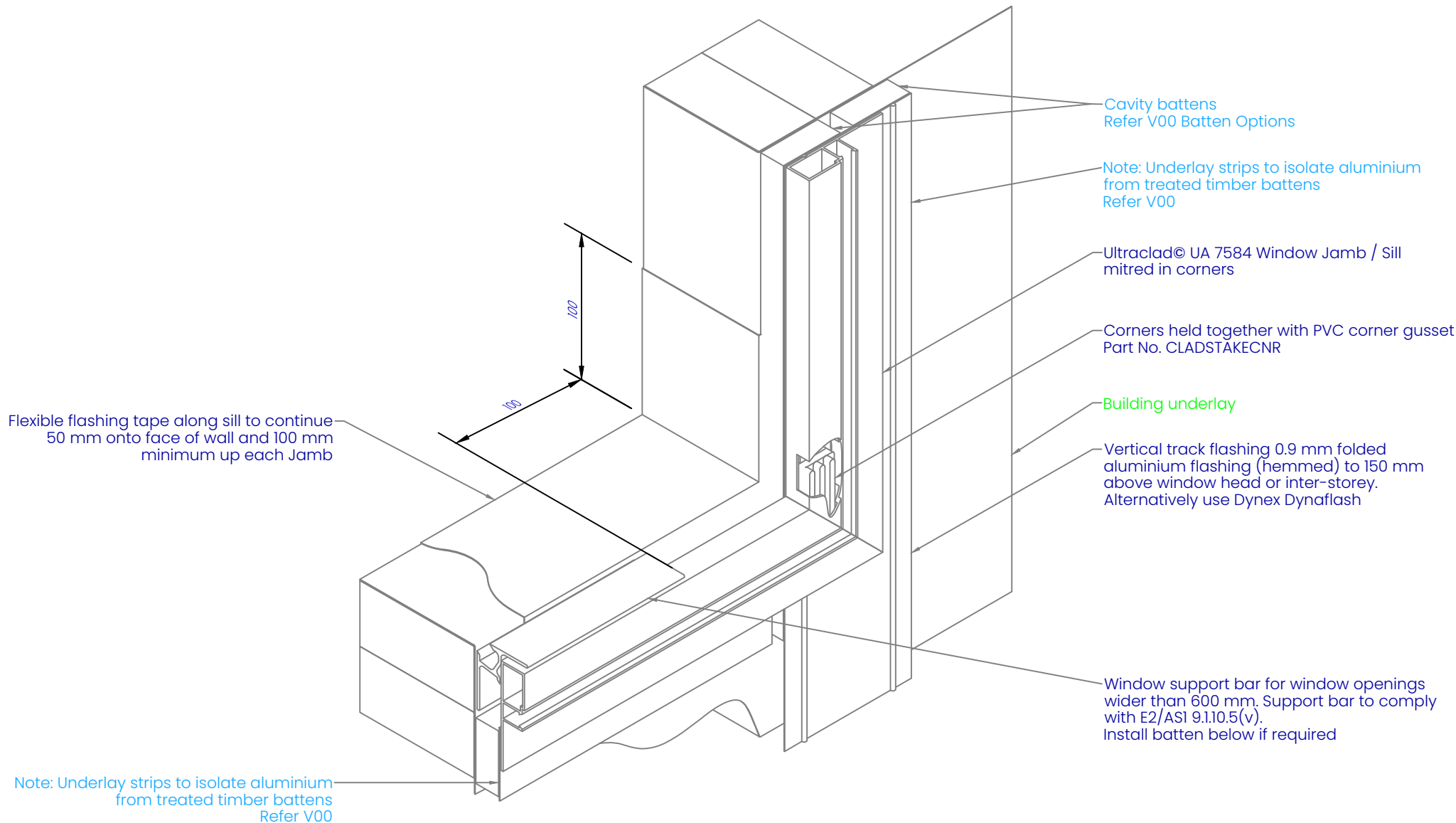


H10 WINDOW JAM ON CAVITY

Building Systems: Horizontal Weatherboard Cavity System

| | |
|----------------------|-------------|
| REVISION: | 11 |
| SCALE: | 1 : 2 (@A4) |
| DATE: | 2024 |
| BRANZ APPRAISAL #487 | |

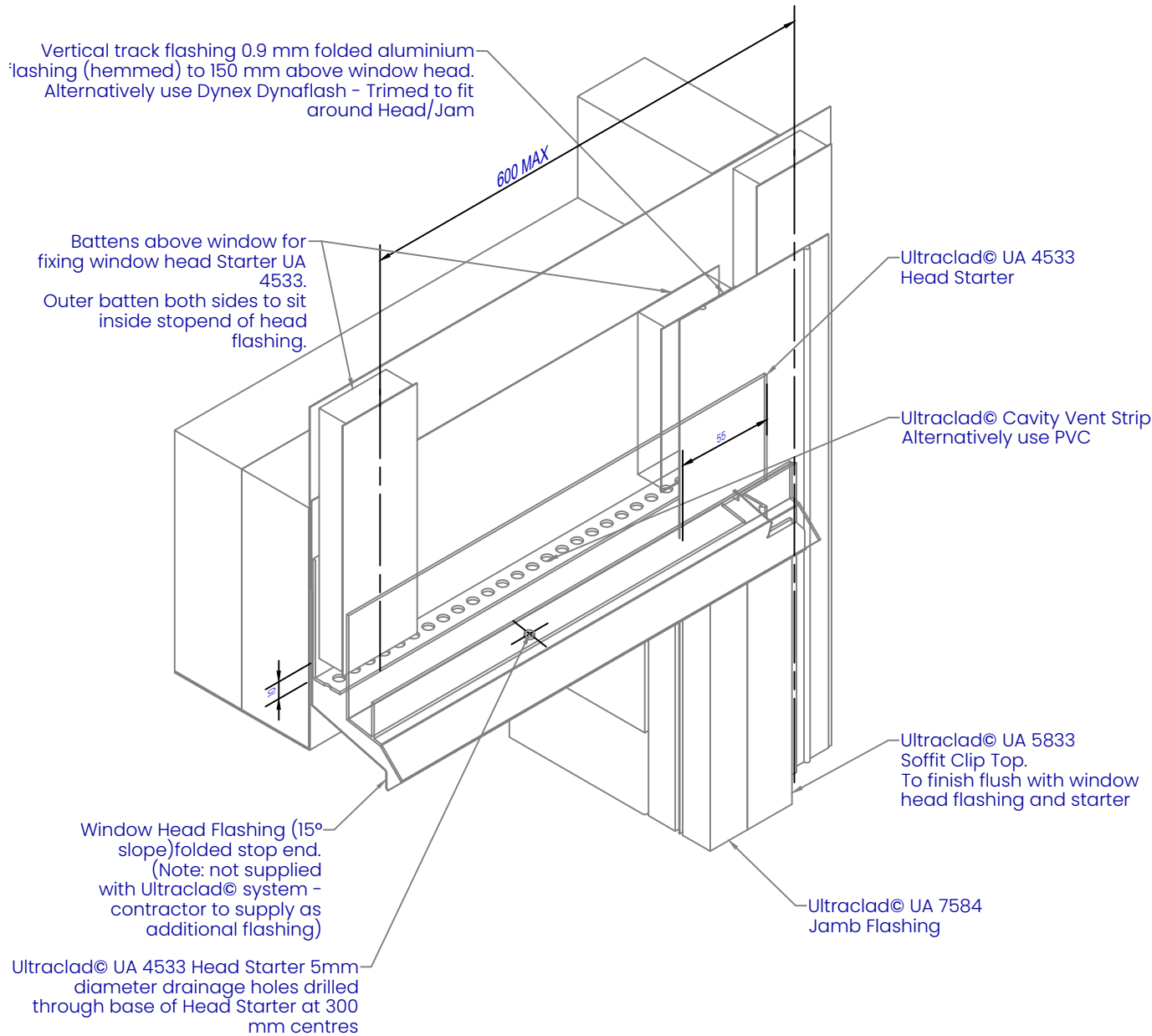




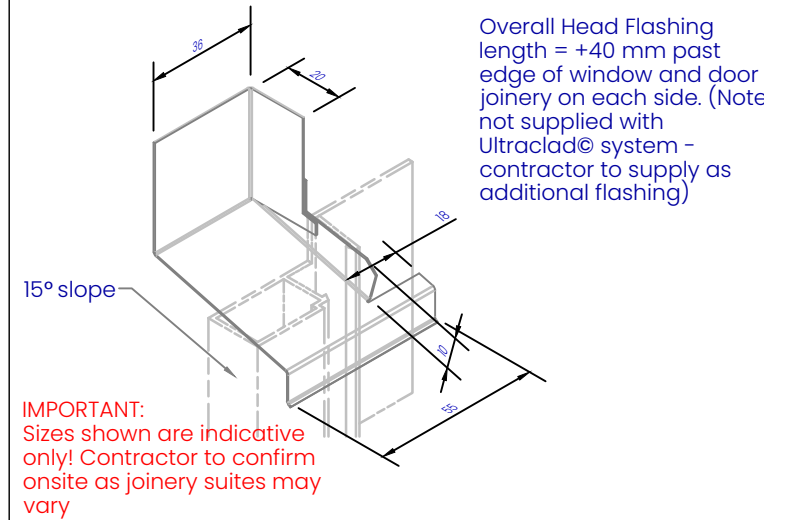
H12 SILL-JAMB ON CAVITY

Building Systems: Horizontal Weatherboard Cavity System

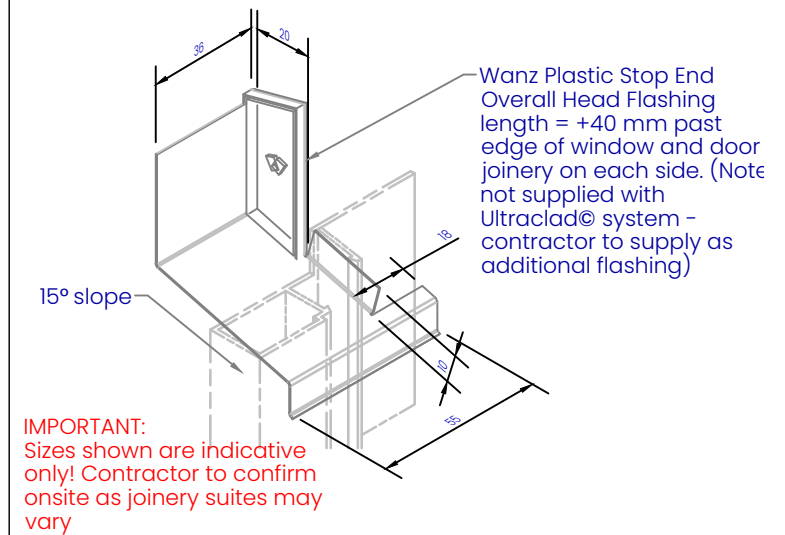
| | |
|----------------------|-------------|
| REVISION: | 11 |
| SCALE: | 1 : 3 (@A4) |
| DATE: | 2024 |
| BRANZ APPRAISAL #487 | |



Window Head Flashing Option 1 Cut & Fold Stop End (1 : 2)



Window Head Flashing Option 2 Wanz Plastic Stop End Cap (1 : 2)



ULTRACLAD
Ultra-high performance cladding systems

PO Box 58009
Botany
Auckland 2163

Tel: 0800 500 338
Email: buildingsystems@vulcan.co
Web: buildingsystems.vulcan.co

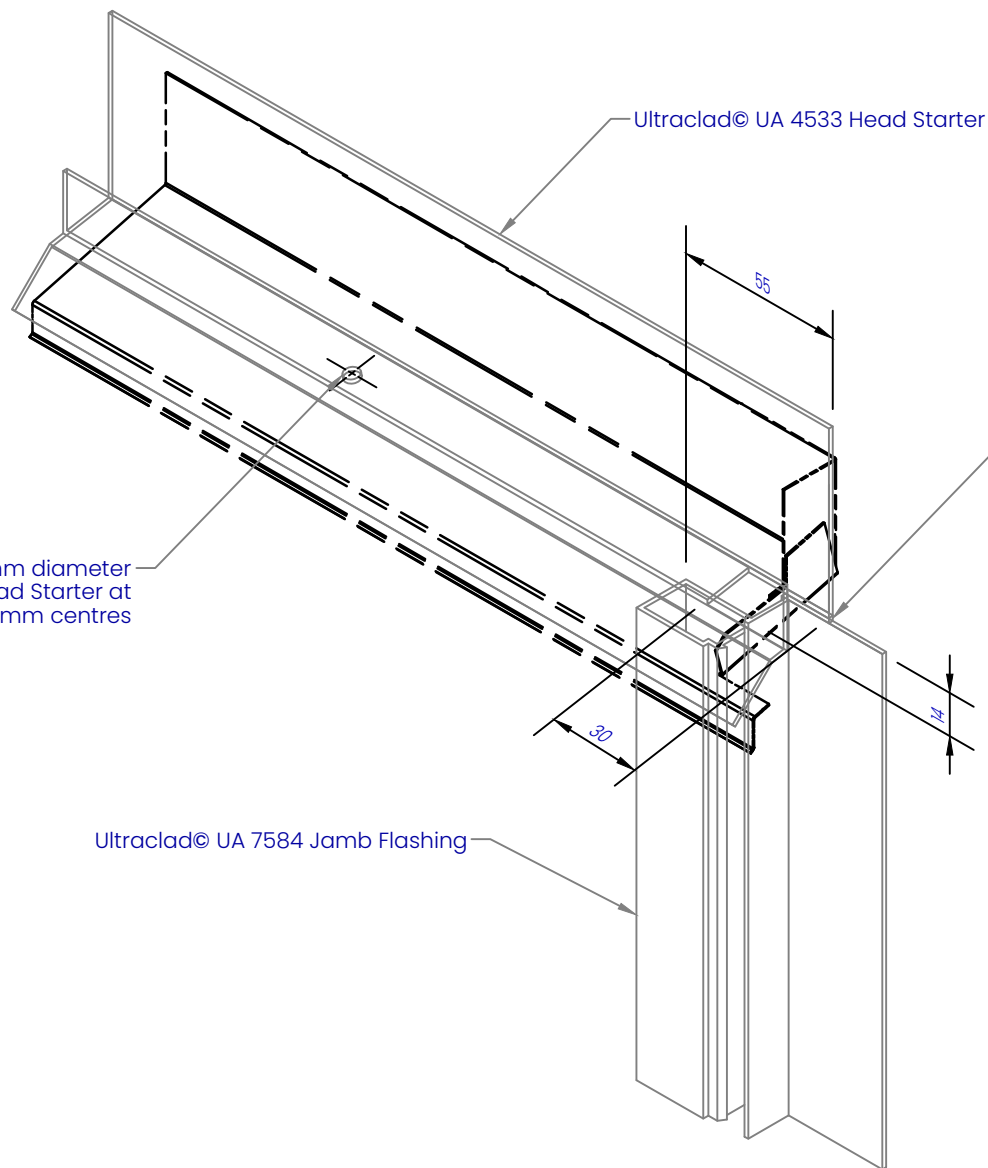
VULCAN.
© 2023 Vulcan. All rights reserved.

H13

HEAD FLASHING / HEAD STARTER / JAMB ISO

Building Systems: Horizontal Weatherboard Cavity System

| | |
|----------------------|-------------|
| REVISION: | 11 |
| SCALE: | 1 : 3 (@A4) |
| DATE: | 2024 |
| BRANZ APPRAISAL #487 | |



Ultraclad® UA 4533 Head Starter 5 mm diameter drainage holes drilled through base of Head Starter at 300 mm centres

IMPORTANT:
Sizes shown are indicative only!
Contractor to confirm onsite as
joinery suites may vary

Applying sealant before fitting UA 4533
sealant at facade

Note: Ultraclad®UA 4533 Head Starter to
extend 40 mm past edge of window or
door joinery.

Building underlay, flashing tape and UA
5833 omitted for clarity

Ultraclad® UA 7584 Jamb Flashing

ULTRACLAD
Ultra-high performance cladding systems

PO Box 58009
Botany
Auckland 2163

Tel: 0800 500 338
Email: buildingsystems@vulcan.co
Web: buildingsystems.vulcan.co

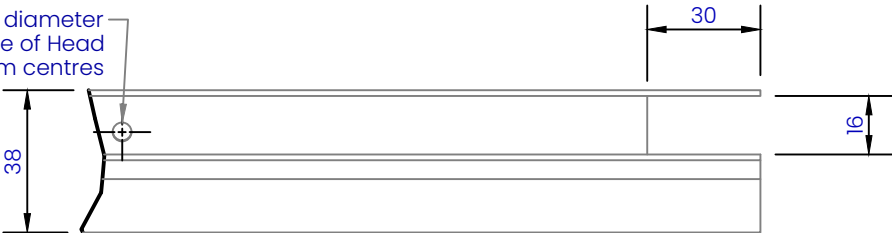
VULCAN.
© 2023 Vulcan. All rights reserved.

H14 HEAD - JAMB ISO

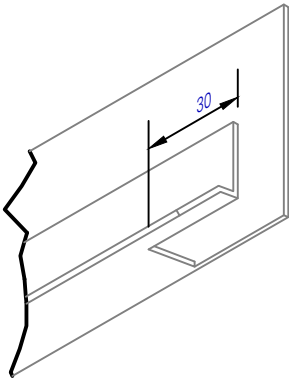
Building Systems: Horizontal Weatherboard Cavity System

| | |
|----------------------|-------------|
| REVISION: | 11 |
| SCALE: | 1 : 2 (@A4) |
| DATE: | 2024 |
| BRANZ APPRAISAL #487 | |

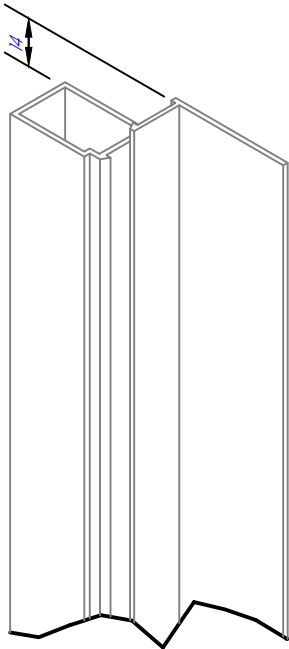
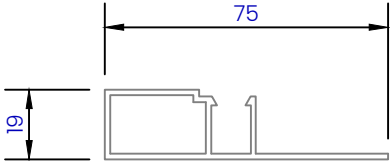
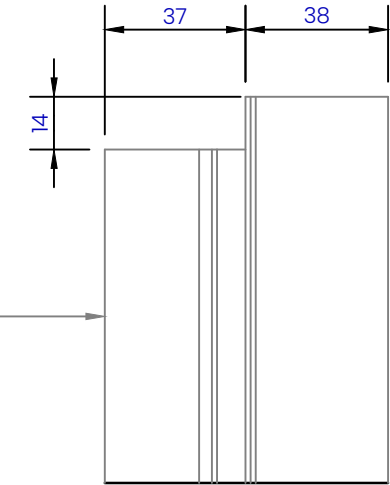
Ultraclad® UA 4533 Head Starter 5 mm diameter
drainage holes drilled through base of Head
Starter at 300 mm centres



IMPORTANT:
Sizes shown are indicative only!
Contractor to confirm onsite as
joinery suites may vary



Ultraclad® UA 7584
Jamb Flashing



ULTRACLAD
Ultra-high performance cladding systems

PO Box 58009
Botany
Auckland 2163

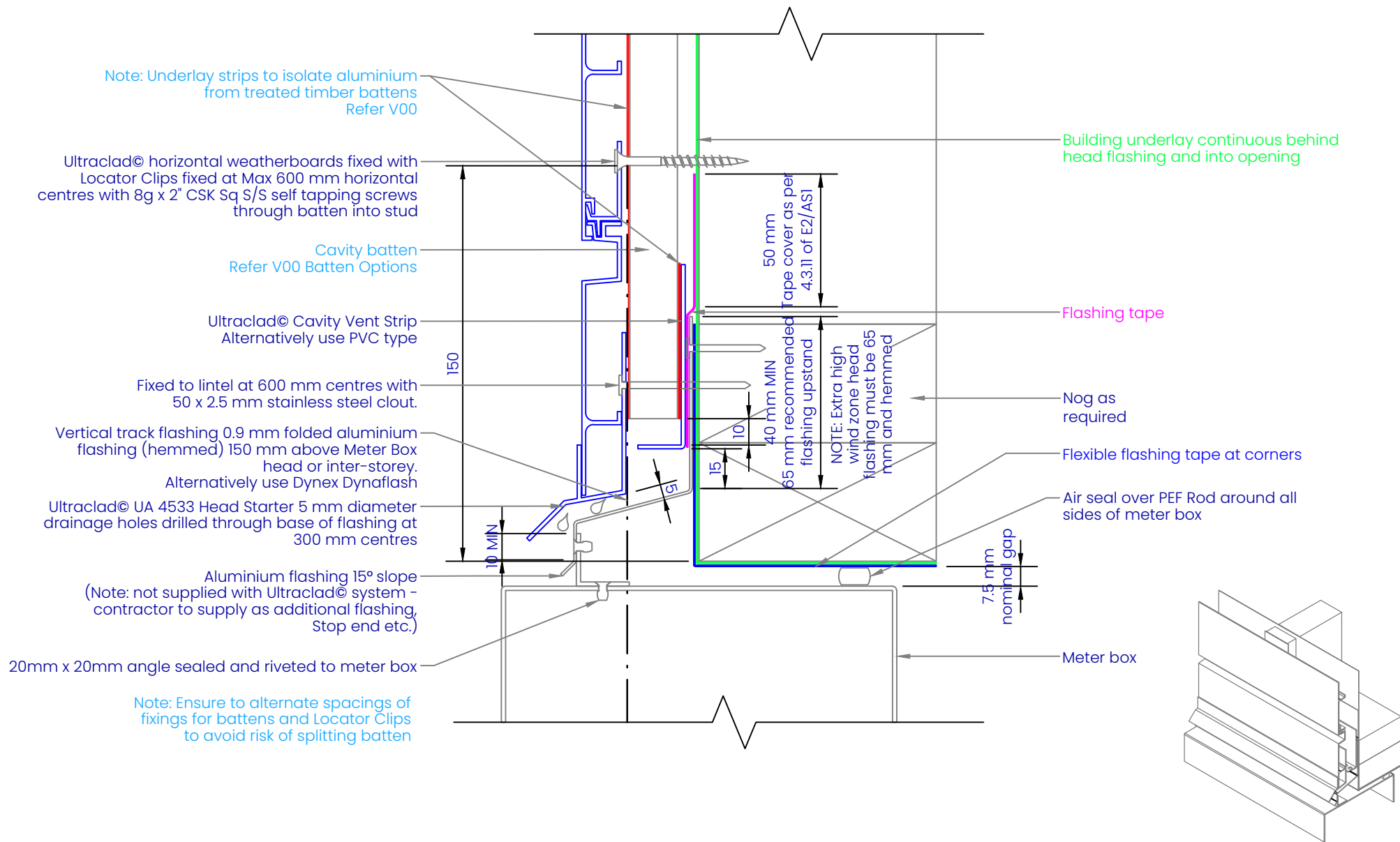
Tel: 0800 500 338
Email: buildingsystems@vulcan.co
Web: buildingsystems.vulcan.co

VULCAN.
© 2023 Vulcan. All rights reserved.

H15 HEAD - JAMB NOTCHING DETAILS

Building Systems: Horizontal Weatherboard Cavity System

| | |
|----------------------|-------------|
| REVISION: | 11 |
| SCALE: | 1 : 2 (@A4) |
| DATE: | 2024 |
| BRANZ APPRAISAL #487 | |



ULTRACLAD

Ultra-high performance cladding systems

PO Box 58009
Botany
Auckland 2163

Tel: 0800 500 338
Email: buildingsystems@vulcan.co
Web: buildingsystems.vulcan.co

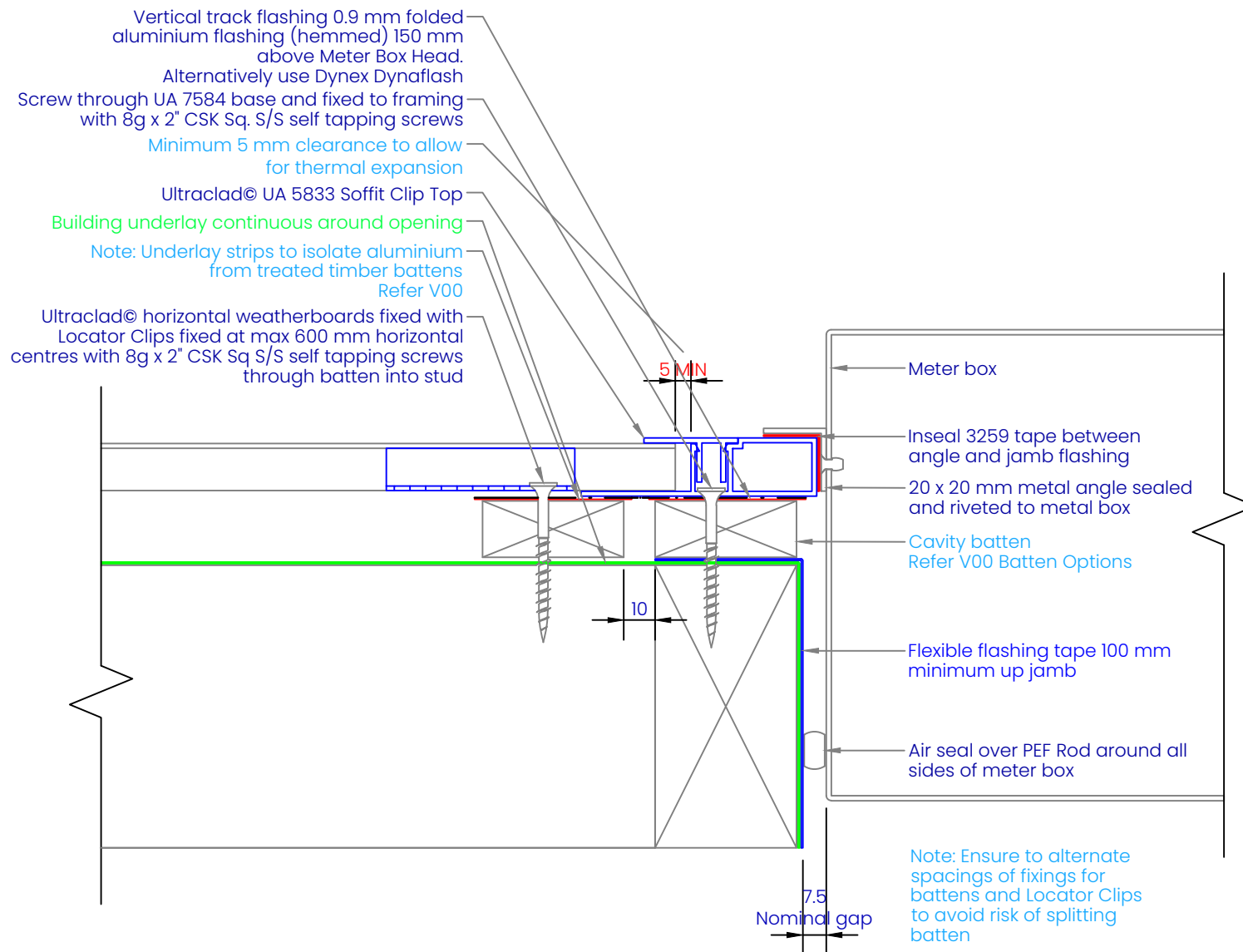
VULCAN.
© 2023 Vulcan. All rights reserved.

H16

METER BOX HEAD ON CAVITY

Building Systems: Horizontal Weatherboard Cavity System

| | |
|----------------------|-------------|
| REVISION: | 11 |
| SCALE: | 1 : 2 (@A4) |
| DATE: | 2024 |
| BRANZ APPRAISAL #487 | |



ULTRACLAD

Ultra-high performance cladding systems

PO Box 58009
Botany
Auckland 2163

Tel: 0800 500 338
Email: buildingsystems@vulcan.co
Web: buildingsystems.vulcan.co

VULCAN.

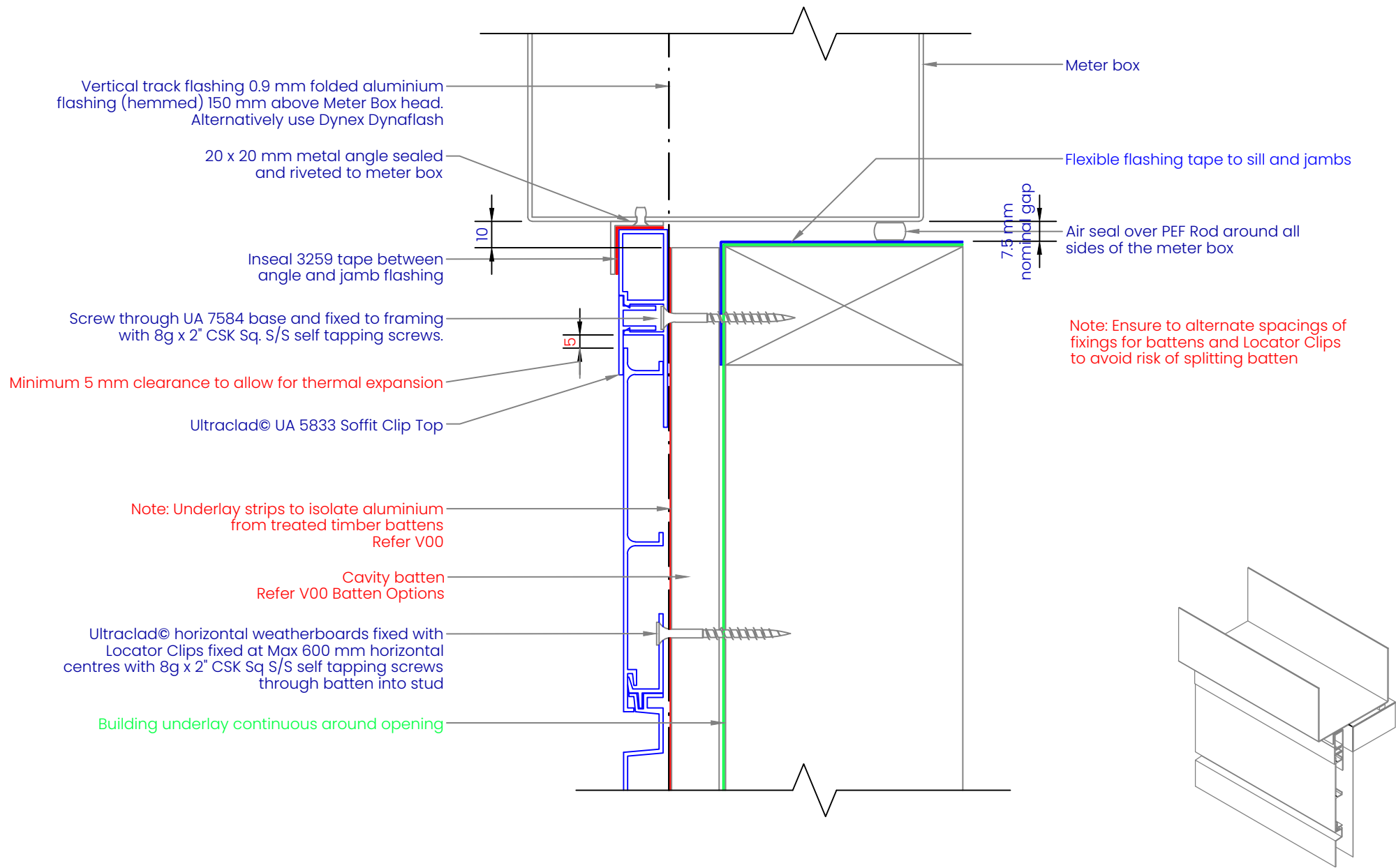
© 2023 Vulcan. All rights reserved.

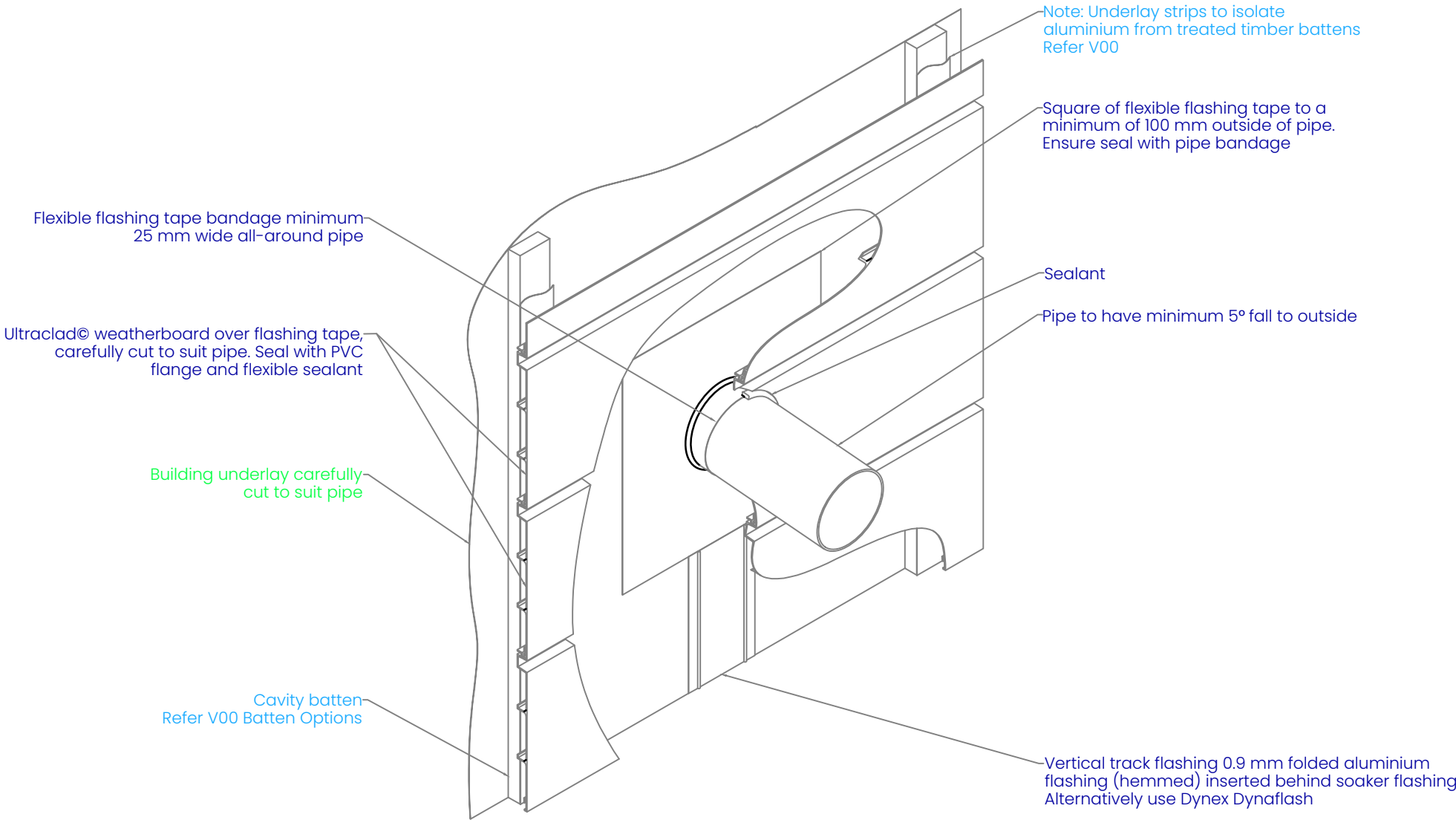
H17

METER BOX JAMB ON CAVITY

Building Systems: Horizontal Weatherboard Cavity System

| | |
|----------------------|-------------|
| REVISION: | 11 |
| SCALE: | 1 : 2 (@A4) |
| DATE: | 2024 |
| BRANZ APPRAISAL #487 | |





ULTRACLAD

Ultra-high performance cladding systems

PO Box 58009
Botany
Auckland 2163

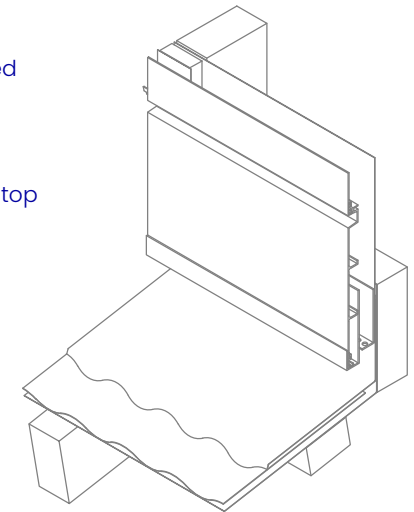
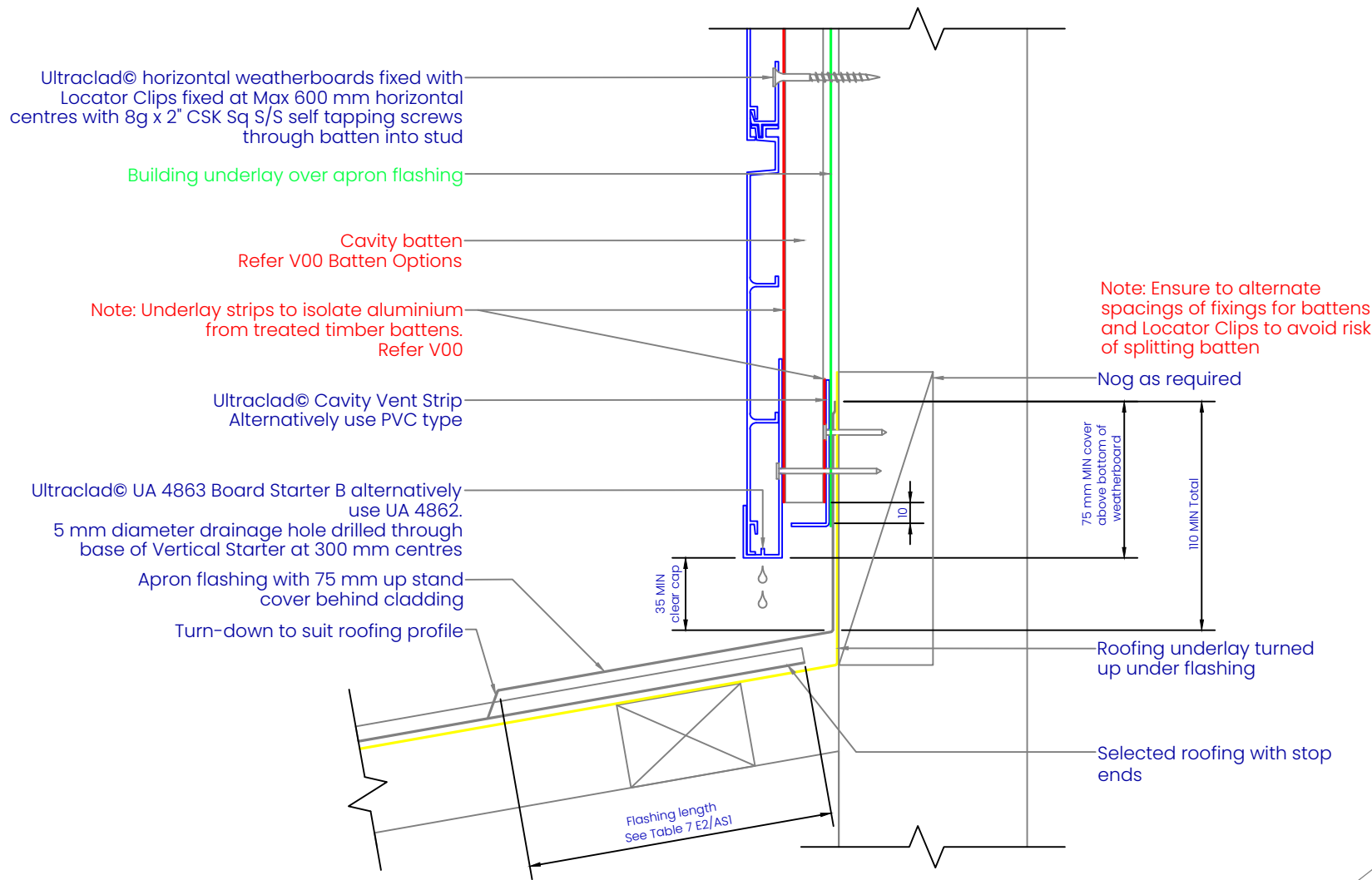
Tel: 0800 500 338
Email: buildingsystems@vulcan.co
Web: buildingsystems.vulcan.co

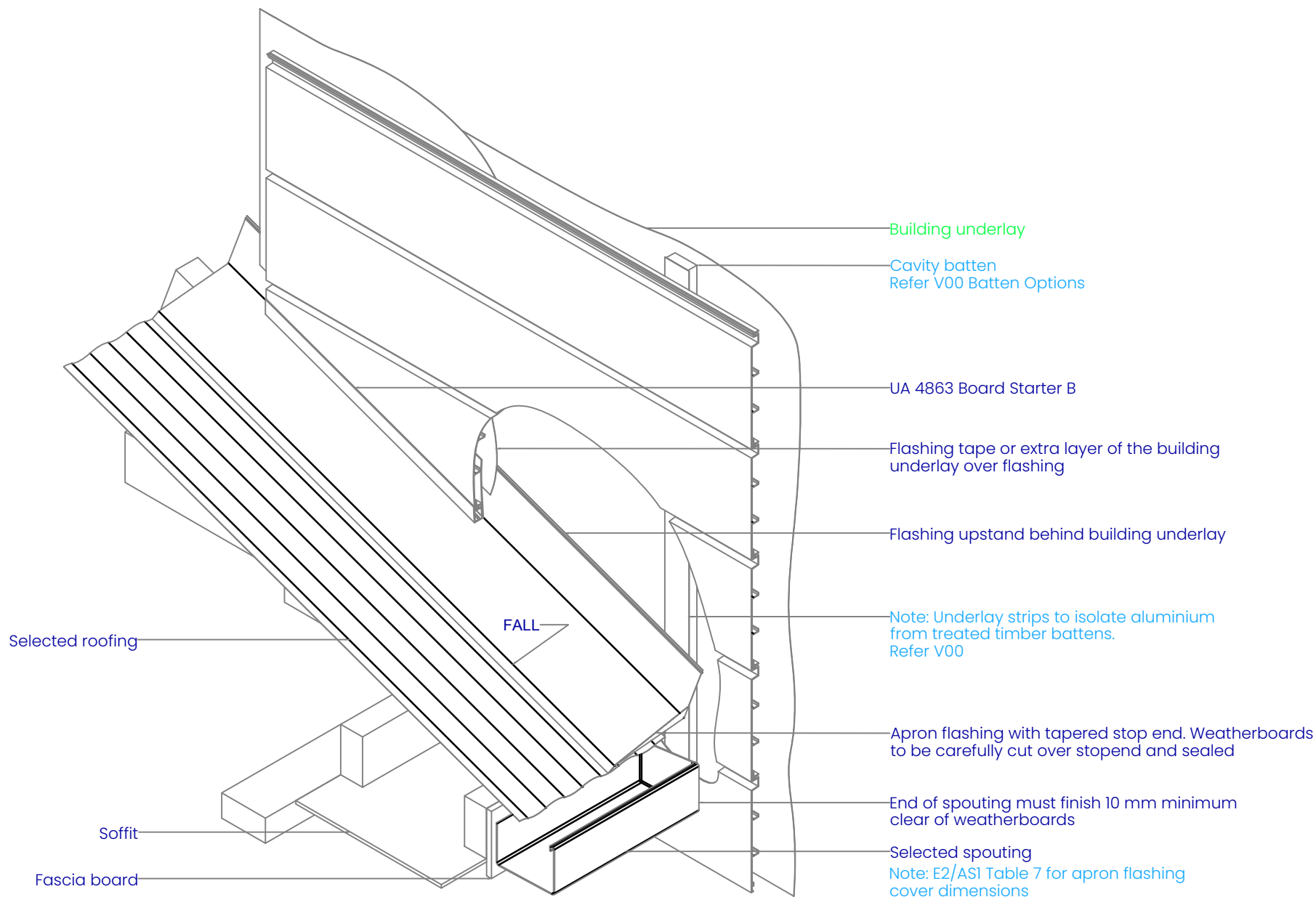
VULCAN.
© 2023 Vulcan. All rights reserved.

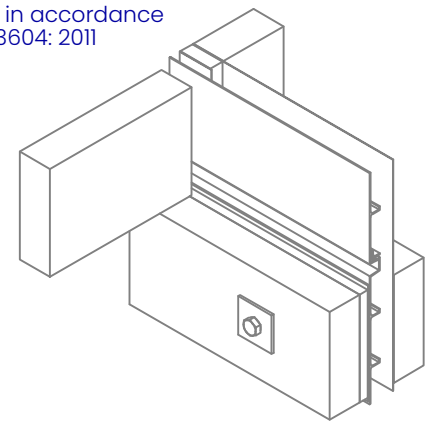
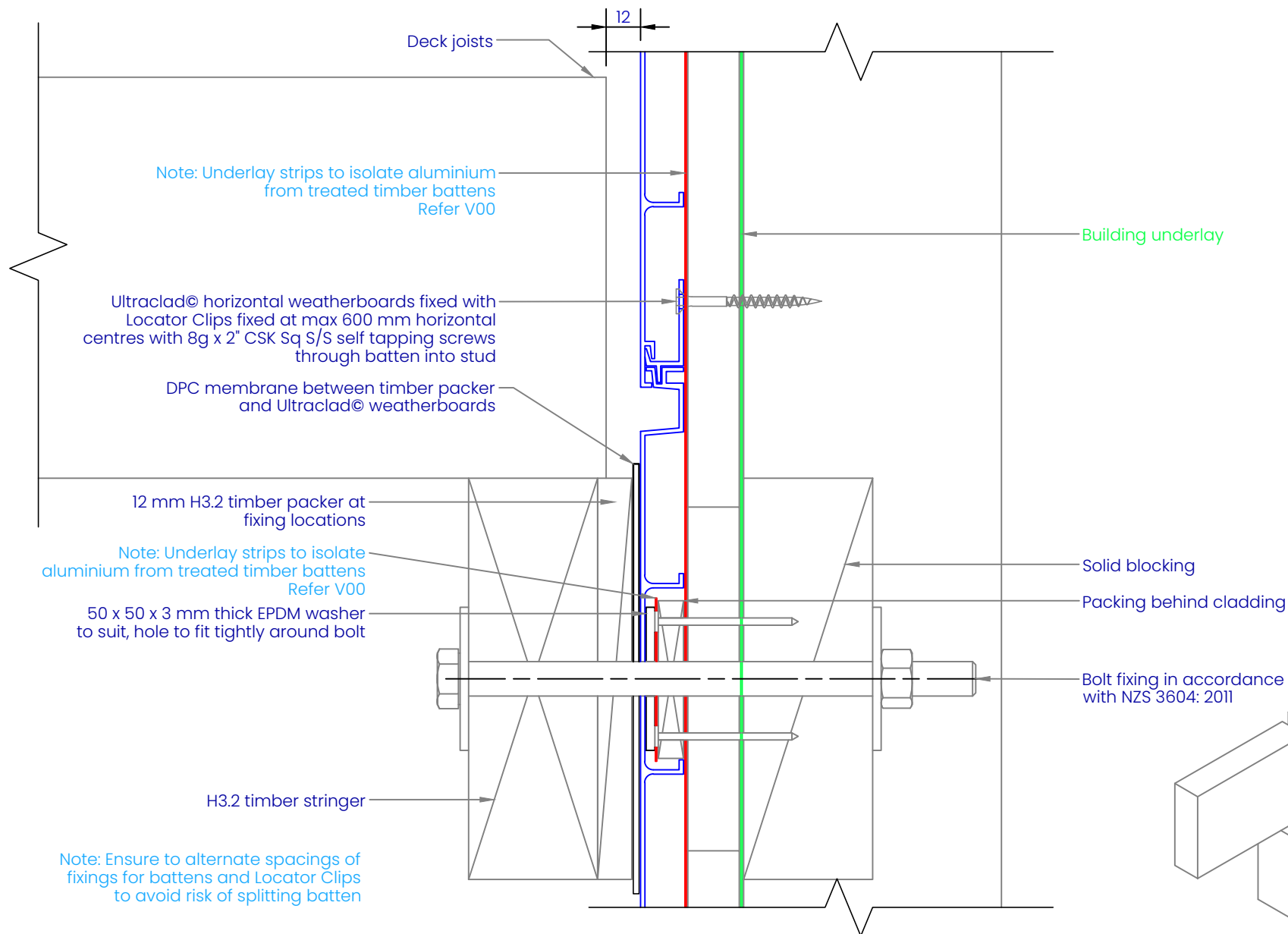
H19
PIPE PENETRATION ON CAVITY

Building Systems: Horizontal Weatherboard Cavity System

| | |
|----------------------|-------------|
| REVISION: | 11 |
| SCALE: | 1 : 6 (@A4) |
| DATE: | 2024 |
| BRANZ APPRAISAL #487 | |







ULTRACLAD
Ultra-high performance cladding systems

PO Box 58009
Botany
Auckland 2163

Tel: 0800 500 338
Email: buildingsystems@vulcan.co
Web: buildingsystems.vulcan.co

VULCAN.
© 2023 Vulcan. All rights reserved.

H23

DECK JUNCTION ON CAVITY

Building Systems: Horizontal Weatherboard Cavity System

| | |
|----------------------|-------------|
| REVISION: | 11 |
| SCALE: | 1 : 2 (@A4) |
| DATE: | 2024 |
| BRANZ APPRAISAL #487 | |

Note: Ensure to alternate spacings of fixings for battens and Locator Clips to avoid risk of splitting batten

Ultraclad® horizontal weatherboards fixed with Locator Clips fixed at max 600 mm horizontal centres with 8g x 2" CSK Sq S/S self tapping screws through batten into stud

Building underlay

Note: Underlay strips to isolate aluminium from treated timber battens Refer V00

Flashing tape

Ultraclad® UA 4862 Board Starter A or alternatively use UA 4863 fixed to bottom plate with 50 x 2.5 mm clouts at 600 mm centres

Ultraclad® UA 7919 Inter-Storey Flashing

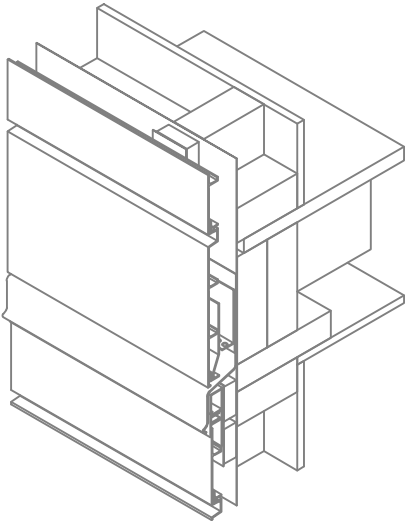
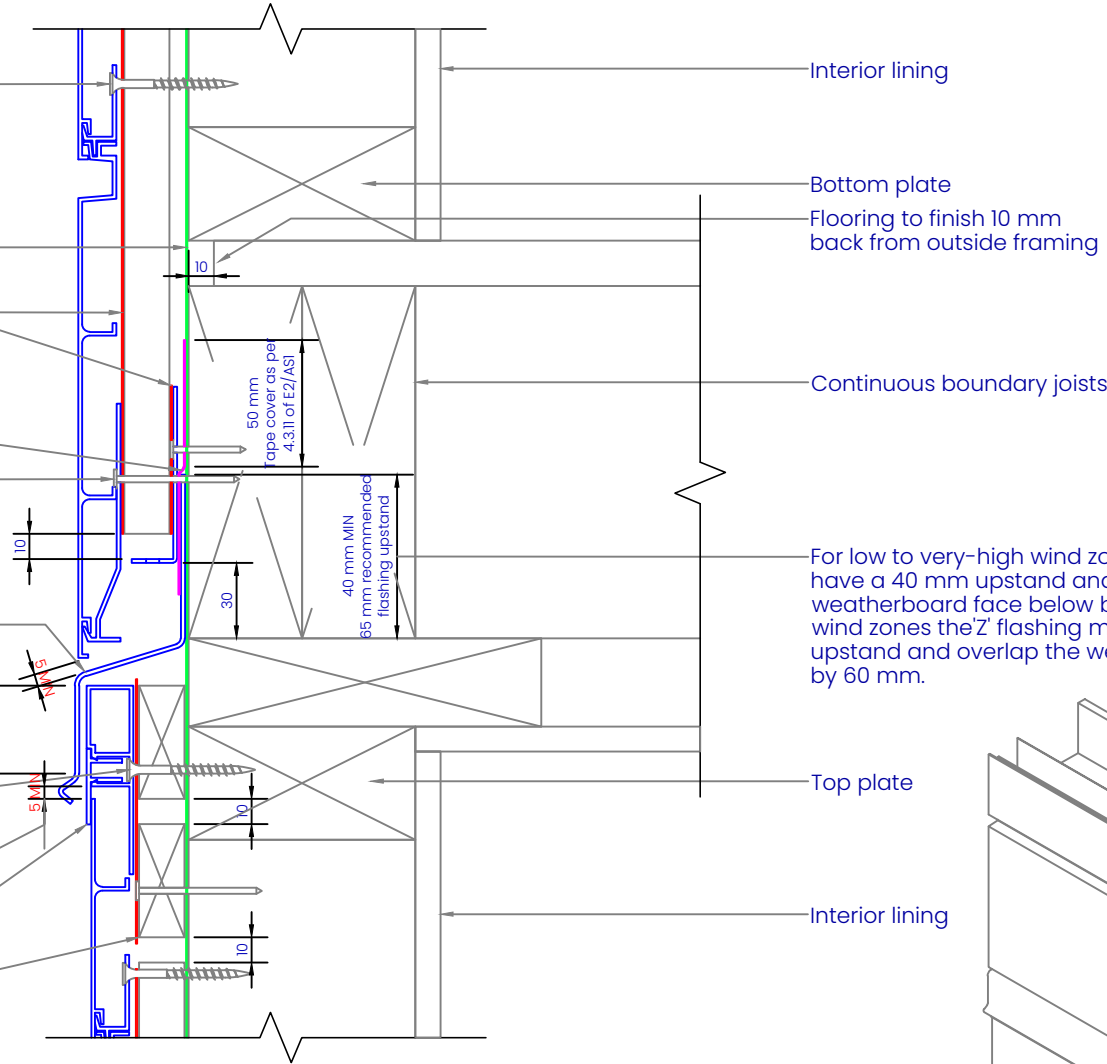
Screw through UA 7584 base at Max 600 mm horizontal centres with 8g x 2" CSK Sq. S/S self tapping screws through batten into frame

Minimum 5 mm clearance to allow for thermal expansion

Ultraclad® UA 5833 Soffit Clip Top

Cavity batten Refer V00 Batten Options

Note: this detail is required to limit cavities to 2 storeys or 7 m Max - Refer E2/AS1 clause 9.1.9.4



ULTRACLAD

Ultra-high performance cladding systems

PO Box 58009
Botany
Auckland 2163

Tel: 0800 500 338
Email: buildingsystems@vulcan.co
Web: buildingsystems.vulcan.co

VULCAN.

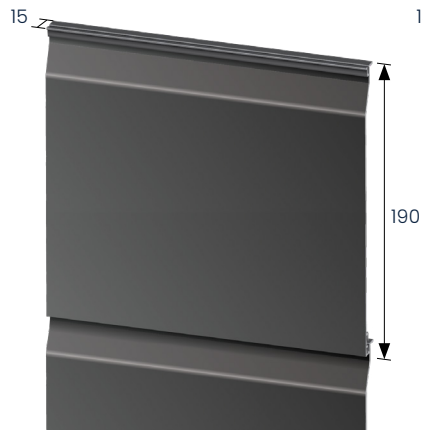
© 2023 Vulcan. All rights reserved.

H24

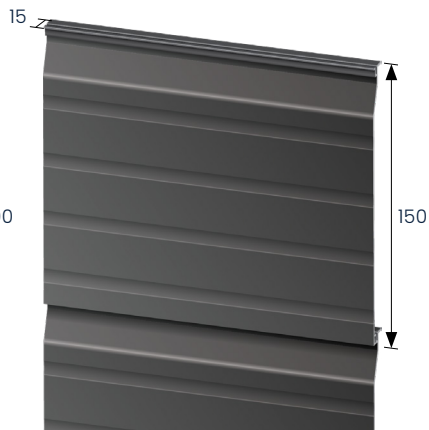
INTER-STOREY JUNCTION ON CAVITY

Building Systems: Horizontal Weatherboard Cavity System

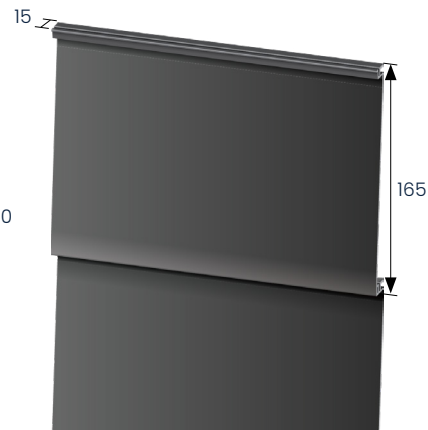
| | |
|----------------------|-------------|
| REVISION: | 11 |
| SCALE: | 1 : 3 (@A4) |
| DATE: | 2024 |
| BRANZ APPRAISAL #487 | |



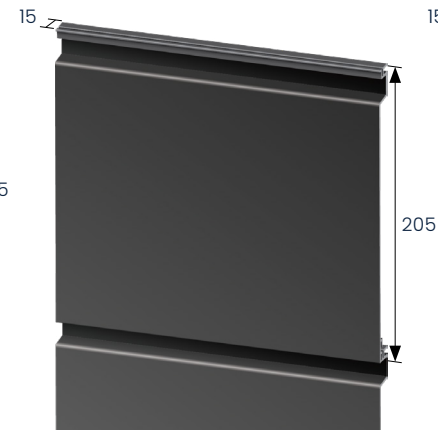
UA 4528 H Standard Board



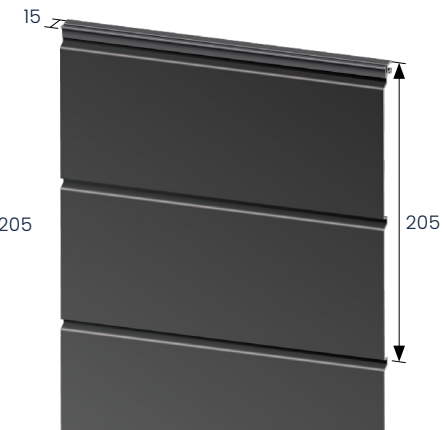
UA 4917 H Tee Board
*only available by special order



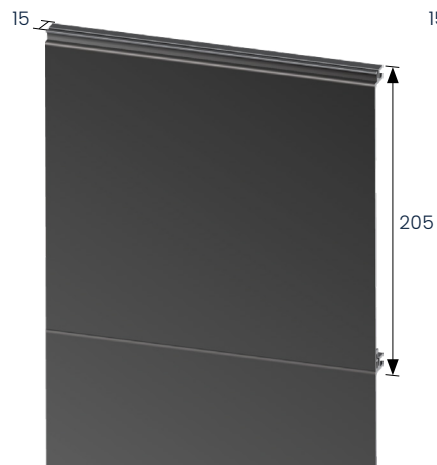
UA 5059 H Traditional Board



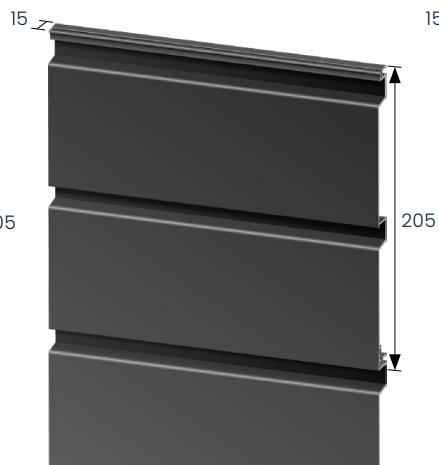
UA 6975 H Shadoline Board



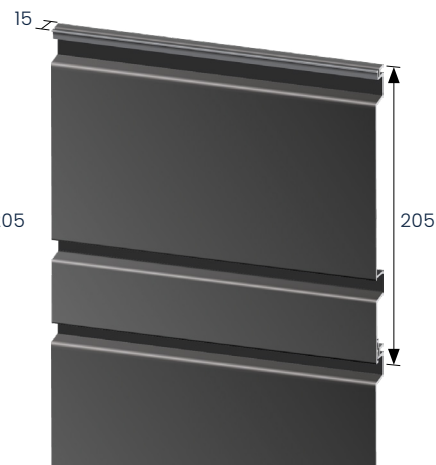
UA 7923 H UltraLine Board



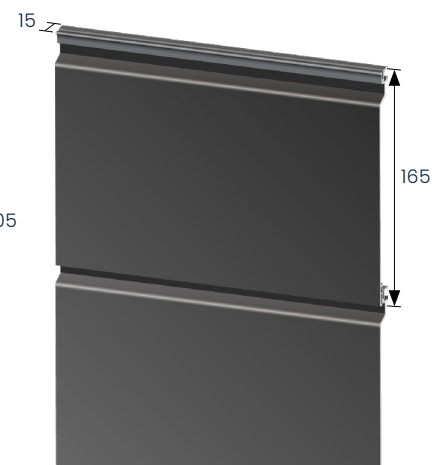
UA 7401 H Infinity Board



UA 7726 H Shado 100 Board



UA 7868 H Shado 140 Board



UA 7922 H Shiplap Board

"Please note that our extrusion profiles may vary slightly in measurements due to the manufacturing process. While we strive for consistency, minor deviations may occur. Additionally, we reserve the right to make improvements or modifications to our products in order to enhance quality or functionality."

ULTRACLAD
Ultra-high performance cladding systems

PO Box 58009
Botany
Auckland 2163

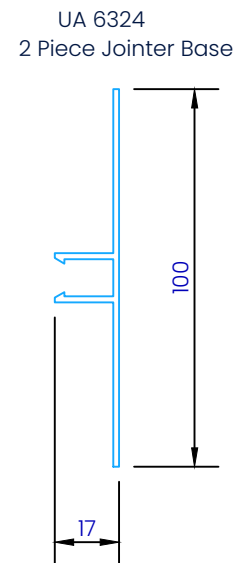
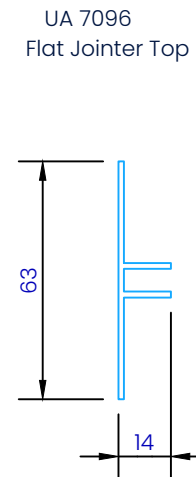
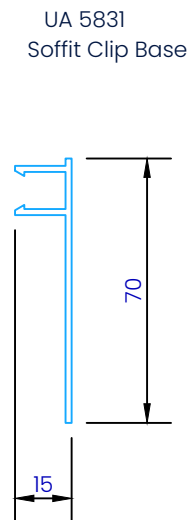
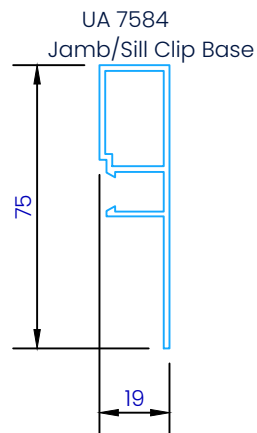
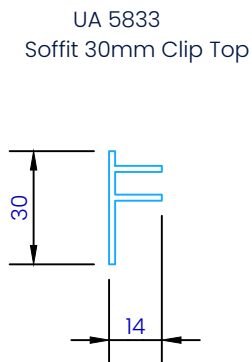
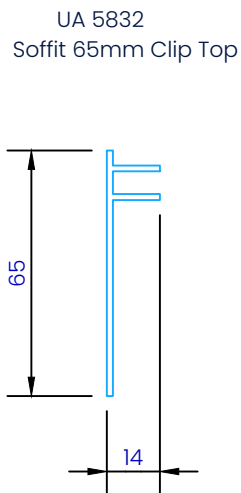
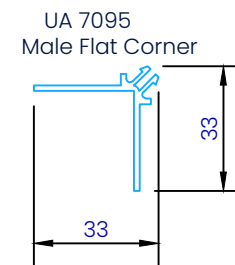
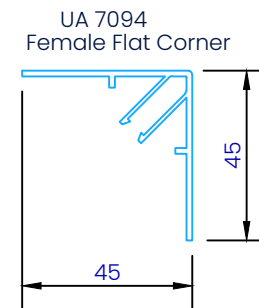
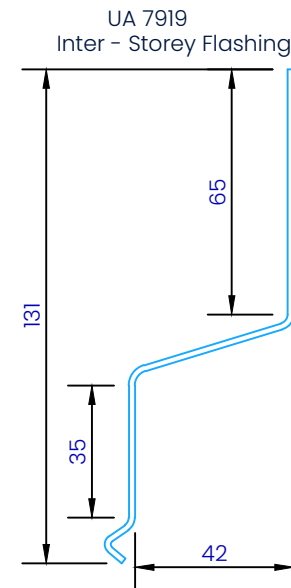
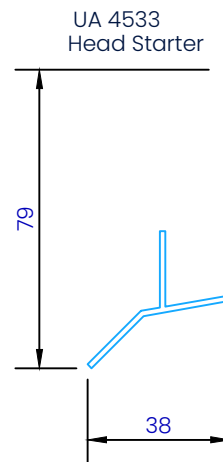
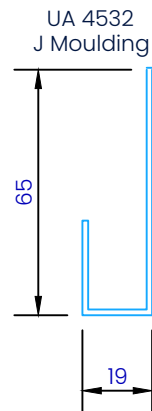
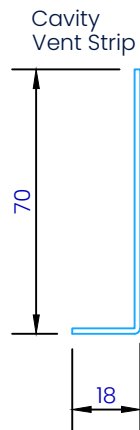
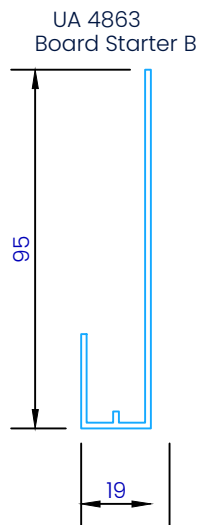
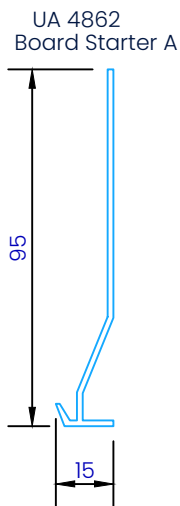
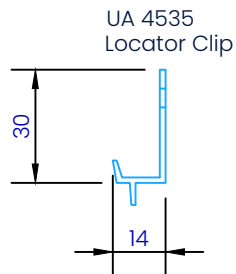
Tel: 0800 500 338
Email: buildingsystems@vulcan.co
Web: buildingsystems.vulcan.co

VULCAN.
© 2023 Vulcan. All rights reserved.

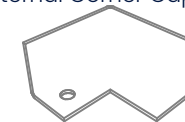
H25 PROFILES

Building Systems: Horizontal Weatherboard Cavity System

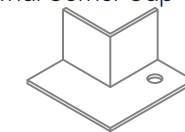
| | |
|----------------------|-------------|
| REVISION: | 11 |
| SCALE: | 1 : 2 (@A4) |
| DATE: | 2024 |
| BRANZ APPRAISAL #487 | |



CLADCNRCAPE
External Corner Cap (1 : 3)



CLADCNRCAPI
Internal Corner Cap (1 : 3)



CLADSTAKECNR
Plastic Staking Corner (1 : 3)

