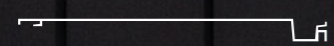


ULTRACLAD®

Ultra-high performance cladding systems.

OFFERED BY
VULCAN

ULTRACLAD



Profile	Shadoline
Location	Queenstown
Colour	Flaxpod



Discover the unparalleled combination of durability and design with UltraClad®

- 06** Why UltraClad®
- 08** Profiles - A range of distinct styles
- 14** UltraClad® - The complete cladding system
- 16** Project - Queenstown Home
- 18** Colour - A spectrum of possibilities
- 20** Project - Christchurch Home
- 24** Project - Wanaka Home
- 26** The Vulcan connection



Why UltraClad®

Our cladding systems are crafted to endure, offering superior resistance against the elements while maintaining their visual integrity. Ideal for architects and builders seeking sustainable, low-maintenance solutions, UltraClad® stands as a testament to eco-friendly, yet striking architectural design.

01 Durability

Crafted from premium extruded aluminium, UltraClad® offers unparalleled durability. It resists the common downfalls of traditional cladding materials, such as rot, warp, or fade, under environmental stresses. This robustness not only enhances the longevity of your structure but also assures peace of mind.

02 Weathertight

Unlike alternative cladding solutions, UltraClad's surface is 100% impermeable, meaning moisture has no way of penetrating the building structure. UltraClad's performance has been rigorously tested and evaluated by BRANZ, and all of our cladding systems surpass the quality standards set by the New Zealand Building Code.

03 Low maintenance

UltraClad's low maintenance aluminium design significantly reduces lifetime costs. It offers lasting quality with minimal upkeep, ensuring cost-effective, long-term value for your facade.

04 Clean lines

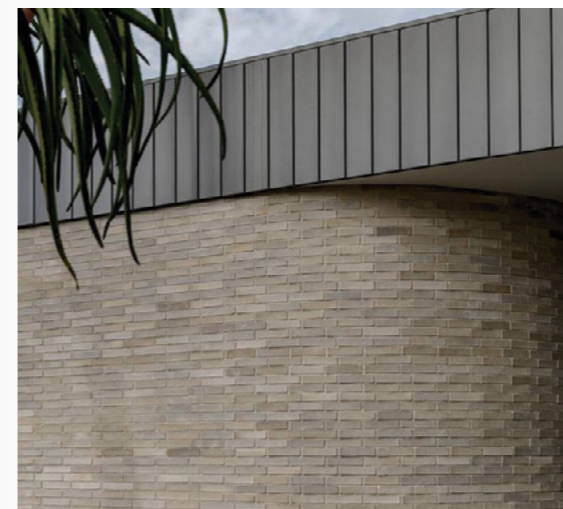
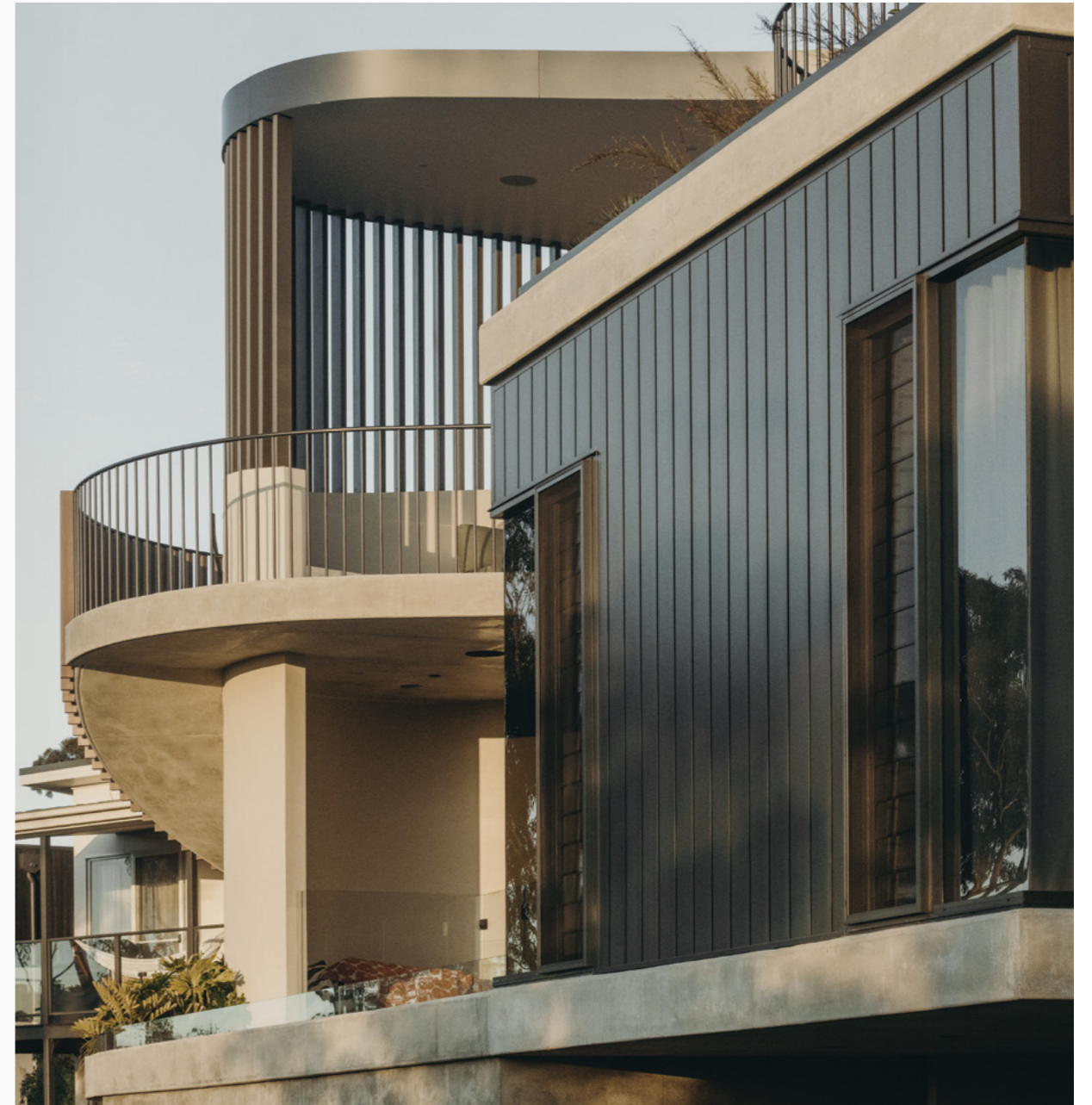
UltraClad® is synonymous with architectural precision, offering clean, straight lines that embody modern design ethos. These crisp lines ensure a contemporary and uniform appearance, enhancing the facade's visual impact.

05 Fire resistance

UltraClad's fire-resistant qualities make it an ideal choice for modern construction. Offering superior protection against fire hazards, it aligns with the highest safety regulations, ensuring your building's resilience in the face of fire.

06 Sustainable

UltraClad® embraces the circular economy with its 100% recyclable aluminium composition, ensuring environmental responsibility alongside architectural innovation. It's an eco-friendly choice that mitigates deforestation and champions sustainability in construction.



A range of distinct styles

Discover our diverse range of cladding profiles, from Infinity's seamless elegance to the classic appeal of Shiplap, UltraClad® offers versatile solutions that blend heritage aesthetics with contemporary resilience for unparalleled visual impact.

UltraClad's versatility means it can be used in a variety of applications, from feature walls and gable ends, to fully clad residential and commercial buildings.

UltraClad® is produced in 8 different profiles which range in width from 140mm to 205mm.

Extruded from 6065 T5 premium grade aluminium, UltraClad® is tested to Australian cyclonic conditions and is backed by an extensive warranty.

UltraClad® Board Specifications

Board length	5m - 6m*
Board width	140mm - 205mm
Board thickness	15mm
Material	6060 T5 Aluminium
Finishes	Powder Coating, Anodising & Metwood

* Non-standard lengths available on request.

UltraClad® ShadoLine

Our most popular profile is renowned for its sleek modern lines. It is ideal for contemporary designs where a minimalistic yet striking appearance is desired.

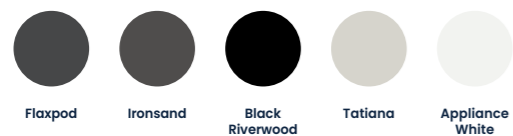
ShadoLine profiles creates more pronounced negative detail, adding depth and texture to the facade. This effect brings a dynamic visual aspect to structures, changing throughout the day with the sun's movement.

ShadoLine can be installed vertically or horizontally, offering flexibility in design for architects and designers.

Profile



Popular Colours



UltraClad® ShadoLine 100

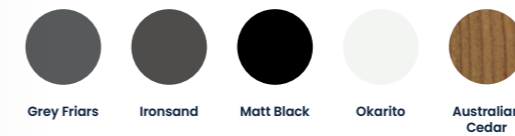
ShadoLine 100 offers a finer, more intricate profile compared to the standard ShadoLine, providing subtle sophistication to smaller feature walls. Its slimmer lines are perfect for accentuating specific architectural elements. This makes ShadoLine 100 particularly well-suited for projects where a more detailed, nuanced aesthetic is desired, bringing elegance and definition to compact design features.

ShadoLine 100 can be installed vertically or horizontally.

Profile



Popular Colours



UltraClad® ShadoLine 140

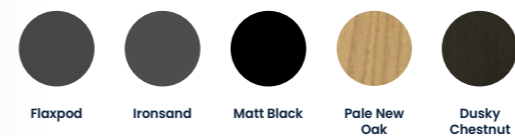
ShadoLine 140 combines both wide and narrow negative details to create a profile reminiscent of shiplap or board and batten styles. This combination adds texture to facades, offering a balanced contrast that suits both modern and traditional designs. The varied spacing enhances depth, making ShadoLine 140 an excellent choice for those looking to introduce a versatile aesthetic to larger surfaces or feature walls.

ShadoLine 140 can be installed vertically or horizontally.

Profile



Popular Colours



UltraClad® Infinity Board

The Infinity profile elevates building aesthetics with its seamless, fluid facade, offering an unparalleled blend of elegance and modern sophistication.

This continuous design not only enhances the architectural flow, making structures appear cohesive and visually expansive, but also creates a clean canvas for shadow effects that add depth and texture.

Infinity Board can be installed vertically or horizontally.



Profile



Popular Colours



UltraClad® Shiplap

The Shiplap profile masterfully merges the classic appeal of traditional shiplap siding with the advantages of modern cladding technology, presenting a unique aesthetic that enriches any architectural project.

It fits seamlessly into both historical renovations and contemporary new builds, ensuring every facade benefits from a heritage look backed by contemporary resilience.

Shiplap can be installed vertically or horizontally.



Profile



Popular Colours



UltraClad® UltraLine

The UltraLine profile stands out for its ability to infuse architectural projects with subtle, yet impactful, aesthetic details.

Its hallmark shallower negative detail is the epitome of modern elegance, providing a sleek and understated look that complements the minimalist trends in contemporary architecture.

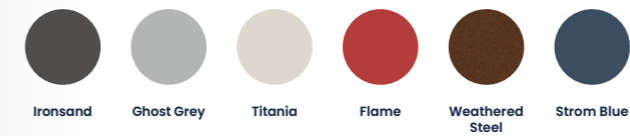
UltraLine can be installed vertically or horizontally.



Profile



Popular Colours



UltraClad® UltraTray

The UltraTray profile elevates architectural design by marrying the dynamic shadow effects inherent in its pronounced positive relief details with the contemporary industrial aesthetic reminiscent of standing seam roofing.

Importantly, UltraTray sets itself apart from traditional roll-formed tray cladding by eliminating the issue of 'oil canning,' a common distortion effect in metal cladding, ensuring a flawlessly sleek and uniform appearance.

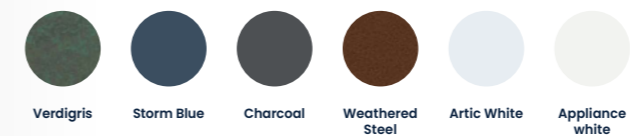
UltraTray can only be installed vertically.



Profile



Popular Colours



UltraClad® Traditional

The UltraClad Infinity profile elevates building aesthetics with its seamless, fluid facade, offering an unparalleled blend of elegance and modern sophistication.

This continuous design not only enhances the architectural flow, making structures appear cohesive and visually expansive, but also creates a clean canvas for shadow effects that add depth and texture.

Profile



Popular Colours



Get creative

Let your imagination run free by combining different profiles to create a custom cladding solution. Our ShadoLine range of boards are a fantastic choice for this creating a random-width finish, along with mixing Infinity Board and UltraTray to create a wide format standing seam finish. There are no limits when using the UltraClad® range for your next project.



ShadoLine 140 ShadoLine ShadoLine 100



UltraTray Infinity Board UltraTray



► UltraClad's versatility means not only can it be mixed and matched with one of our own profiles, it also sits in harmony with other exterior finishes.

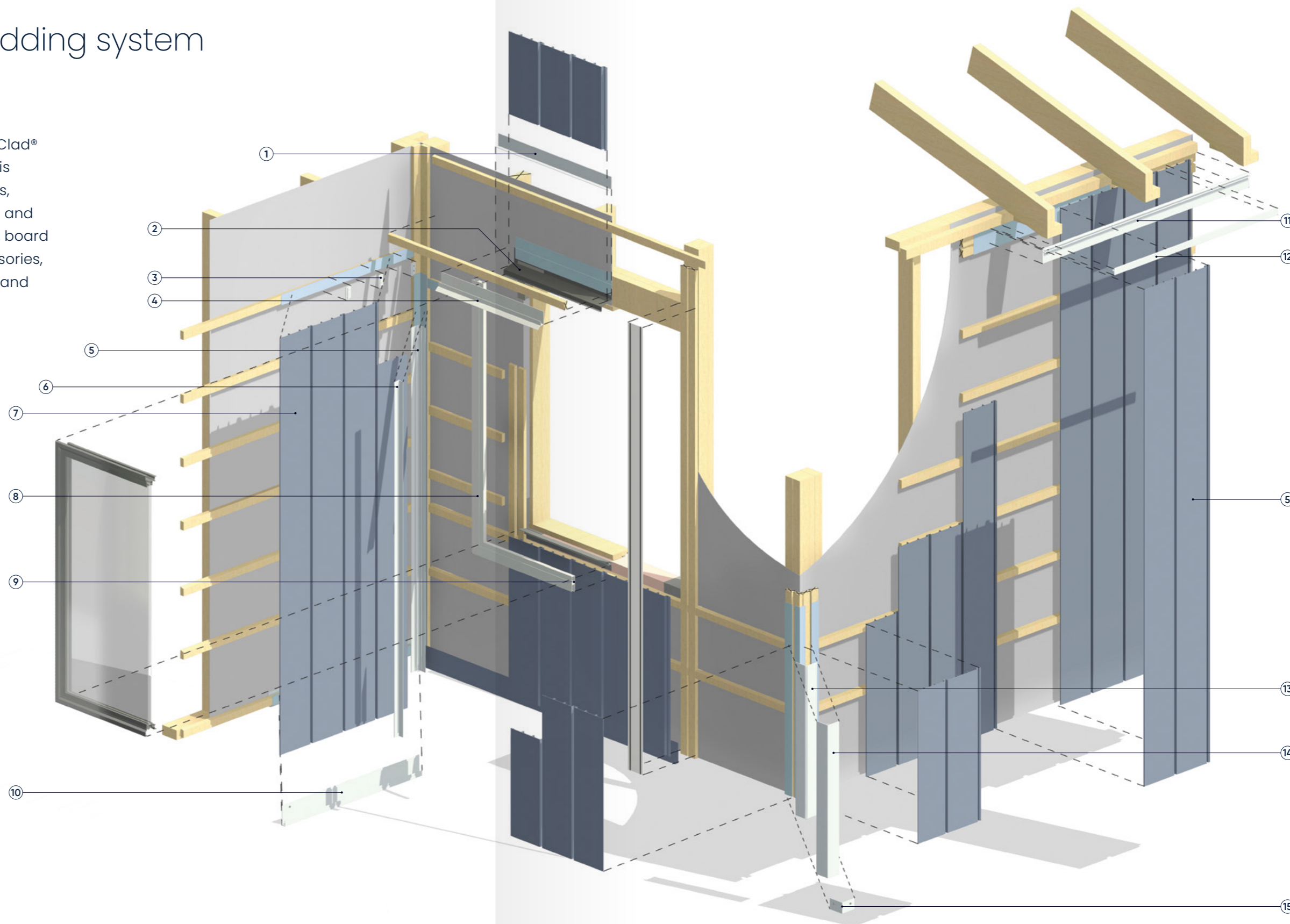


The complete cladding system

To add with ease of installation UltraClad® is supplied as a complete system. This consists of aluminium weatherboards, locators for concealed fixing, internal and external corner moulds, starter strips, board jointers, window flashings and accessories, making for faster construction times and reduced costs.

UltraClad® System Components

- 1 Cavity Vent Strip
- 2 Window Head Flashing
- 3 Locator Clip
- 4 Head Starter
- 5 Female Internal Corner Flashing
- 6 Male Internal Corner Flashing
- 7 Vertical Weatherboard
- 8 Soffit 30mm Cliptop
- 9 Jamb/Sill Clipbase
- 10 Vertical Board Starter
- 11 Soffit Clip Base
- 12 Soffit Clip Top
- 13 Male External Corner Flashing
- 14 Female External Corner Flashing
- 15 Corner End Cap



Please scan to view our technical specifications and resources.

ULTRACLAD



Profiles	ShadoLine and Infinity Board
Location	Wanaka
Colour	Metro Coal Dust Kinetic



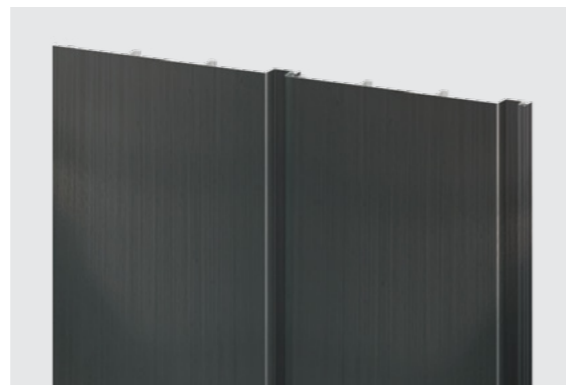


- ▶ UltraClad's design combines beauty with exceptional durability, making it the perfect choice for even the most demanding environments.



A spectrum of possibilities

UltraClad® can be customised in nearly limitless colours through powder coating or anodising. Additionally, we offer sublimated wood grain effects for a natural look. Our coating systems provide enhanced durability and resistance to fading compared to conventional paint, ensuring long-lasting vibrancy and protection.



Powder Coating

Powder Coating is a dry finishing process created by an electric charge that causes a dry powder to fuse to the surface of the metal. This is then baked in a curing oven resulting in a smooth, hard finish that is tougher than conventional paint.

UltraClad® is available in a wide range of colours from both Dulux and Interpon.

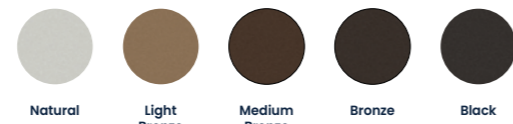
Popular Powder Coating colours



Anodising

Anodising is an electrochemical process that enhances the corrosion resistance of aluminium. The anodizing process results in a hard, durable, and corrosion-resistant surface layer. Anodizing is a relatively environmentally friendly process as it does not involve heavy metals or produce harmful byproducts.

Popular Anodising colours



Metwood

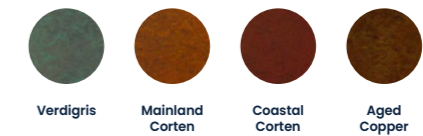
Method combines the warmth & beauty of wood, with the durability of aluminium. Metwood is ideal for both interior and exterior use. The sublimated finishes exhibits the natural variations of colour, grain and blemishes that are seen in real wood and has a 10 year warranty on the pattern. Metwood is virtually maintenance free with non-warping properties and is impact and scratch resistant.

As well as the many woodgrain finishes, MetWood is also available in Patina Metal, Brushed Metal, Concrete and Marble finishes. If you're after a look that's urban and sleek, or old and gnarly there's plenty to choose from.

Popular Woodgrain Finishes



Non-woodgrain Finishes




Please scan to view our full colour guide.



◀ Our coating systems offer excellent durability and fade resistance, ensuring long-lasting color and protection.





ULTRACLAD 

Profile ShadoLine

Location Wanaka

Colour Flaxpod

The Vulcan connection

Vulcan was founded to become the most customer focused and efficient metals distributor in Australasia, by delivering superior service we have grown consistently ever since.

Today the diversity of products we offer, and the geographic spread of our operations means Vulcan has become a key supplier to the Australasian economy. We have 69 warehousing, manufacturing, and processing facilities throughout Australia and New Zealand, employing over ~1300 staff, across six business divisions.



Superior Service

Our service is the reason for our success over the past 26 years. We are dedicated to delivering the best service in Australasia bar none. With a DIFOT consistently in the high 90's Vulcan is a leader in the industry.

Supply Chain

With 69 strategically located facilities across Australia and New Zealand, Vulcan has the infrastructure and expertise to manage your supply needs efficiently. Our robust warehousing and logistics network allows us to provide flexible and reliable delivery solutions tailored to your project timelines and supply requirements. We ensure that you have the right products at the right time, keeping your projects on track and your operations running smoothly.

Sustainability

Vulcan is committed to minimising the impact our business activities have on the environment. Having conducted an independently audited ghg inventory, we have an improvement plan to minimise our carbon footprint, including solar energy and other sustainability innovations.

Stability

Vulcan is part of a large, long-standing company that has built a reputation for excellence and reliability in the industry. With a strong financial foundation and a proven track record of success, we provide the stability and confidence you need in a supplier. Our long-term presence in the market reflects our commitment to ongoing growth and partnership with our customers, ensuring that we are here to support your business for the long haul.



VULCAN▲

269 Ti Rakau Drive,
Burswood, Auckland 2013

New Zealand: 0800 500 338
Australia: 1300 650 075

buildingsystems.vulcan.co